



## Cultural Site Sheet

Cultural site name	State Museum of Modern and Medieval Art
Type of site	Museum
Address	Via San Lorentino 8
City	Arezzo
Contacts	+39 0575 169 6257+39 3346053270 Email <a href="mailto:drm-tos.museomedemod@cultura.gov.it">drm-tos.museomedemod@cultura.gov.it</a>
Website	<a href="https://museiarezzo.it/museo-darte-medievale-e-moderna/">https://museiarezzo.it/museo-darte-medievale-e-moderna/</a>
WCAG 2.1 compliant accessible website	NO

**TESTED BY:** [Handy Superabile Social Promotion Association](#) in summer 2024

**Please note** The following information refers to the date of verification shown at the bottom of each sheet. **The Association** is not responsible for any significant changes made by the property after the visit.

### Summary

Cultural Site Sheet.....	1
Description.....	2
Arrival at the property.....	2
Private/public parking.....	2
Pathway from the car park to the entrance .....	3
Reception .....	4
Itineraries .....	5
Services .....	10
Additional elements.....	10
Toilets for guests with reduced mobility .....	10
Medical practices/healthcare facilities.....	12

Project carried out with the contribution of the





## Description

The State Museum of Medieval and Modern Art is located inside the Palazzo della Dogana, one of the most important buildings in the city. The museum is divided into twenty rooms according to a chronological path that from the early Middle Ages reaches the nineteenth century and houses prestigious works of art.

## General information

Opening and closing period	Closed on Mondays, 1 January, 25 December
Times	Tuesday and Wednesday 08.30 19.00 Thursday to Saturday 08.30 13.30 First Sunday of the month and midweek holidays 08.30 13.30
Ticket cost	6 euros. Free admission every first Sunday of the month
Reductions	2 euros. For reduced tickets and free tickets, please consult the following link. <a href="https://museiarezzo.it/agevolazioni/">https://museiarezzo.it/agevolazioni/</a>
Online purchase	YES
Pet access	Not detected

## Arrival at the property

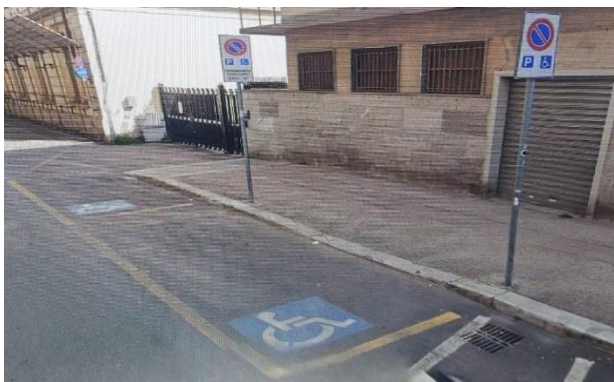
### Private/public parking

Presence of private parking	NO
Public parking nearby	YES
Type of flooring in the public car park	asphalt
Presence of parking space reserved for people with disabilities	SI num. 7
Eventual notes	Cadorna car park: Parking spaces for the disabled: 7 between inside and outside the

Project carried out with the contribution of the





	car park, along the access lane from Via Porta Buia.
	

### Pathway from the car park to the entrance

The property can be reached from the car park	flat
Distance from parking to entrance	350 meters
There are indicators and tactile maps	NO
There is an accessible entrance	YES main entrance
How to access the site	<input checked="" type="checkbox"/> entrance of about 10 meters with a maximum slope of 8%
Useful width of door/entrance gate	Above 90 cm
Type of door	with inwardly opening door
Type of handle	Not detected





## Reception

How to access	flat
Priority access for visitors with disabilities	YES
Orientation signs	<input checked="" type="checkbox"/> directional signs placed at 140/170 cm with contrasting colors  <input checked="" type="checkbox"/> Signs identifying rooms and paths placed at 140/170 cm with contrasting colors
Type of information material	<input checked="" type="checkbox"/> guides in large print <input checked="" type="checkbox"/> Audio guides <input checked="" type="checkbox"/> QR code
A cloakroom accessible to visitors with motor disabilities is available	YES
Multilingual staff	YES







The staff followed a training course on welcoming people with different disabilities	NO
Presence of sign language interpreters	NO
Reception desk height	123 cm
The following aids are available for visitors with disabilities	<input checked="" type="checkbox"/> manual wheelchair
Eventual notes	
	
	

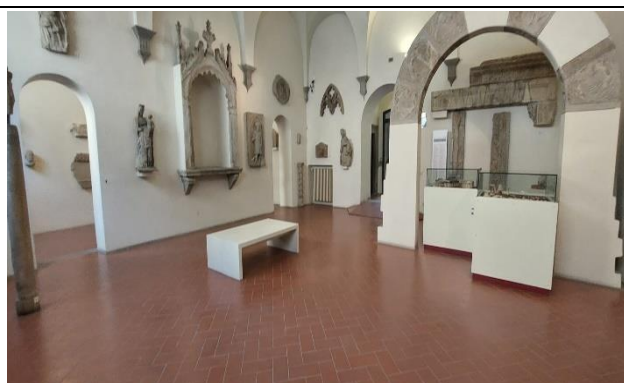
## Itineraries

Presence of maps	YES
Touch indicators and visual-touch maps	NO
Presence of didactic panels	YES
Audio guide	YES
Touch Models	NO
Multimedia workstations accessible from a seated position	NO







Routes dedicated to children	Not detected
Stopping points	YES
Route spread over several floors	YES 3 floors
Access to the starting point of the route	flat
Eventual notes	On the ground floor, from the reception, the visit of the first rooms dedicated to medieval art begins with flat access. Present glass door without handle, width about 80





	
<p>Eventual notes</p>	<p>Ground floor: ramp between rooms 1 and 2, length 120 cm, width 110 cm, slope 16%.  Ramp between rooms 2 and 3 length 70 cm, width 89 cm slope 26%  Exit ramp: length 120cm, width 200 cm, slope 16%  90 cm exit door with lever handle, internal opening. After the exit presence of a step 2 cm</p>
<p>How to access rooms 1 and 2 on the 1st floor</p>	<p><input checked="" type="checkbox"/> via ramp first ramp length 36 cm, width 120 cm, slope 16.5 %, No handrail. Ramp interrupted by a parking shelf, second ramp length 240 cm, width 140 cm, slope 10.5% handrail to the right.  <input checked="" type="checkbox"/> by elevator door width 85 cm, cabin width 87 cm, cabin depth 144cm, call button height 100cm, highest keyboard button height 140, embossed/braille keys. Scalene trapezoid elevator shape  <input type="checkbox"/> via stairlift</p>







Usable width of door/entrance gate/corridor	Above 90 cm
Room Identification	by means of a sign placed 110 cm from the ground with black text on a white background
Bulletin board/information panels and captions	<input type="checkbox"/> captions positioned 110/160 cm from the ground  <input checked="" type="checkbox"/> Shadow-free fonts and serifs  <input checked="" type="checkbox"/> Well-contrasted font, better black on a white/cream background
Eventual notes.	<p>Floor 1 :</p> <p>In some entrance doors to the rooms there are thresholds of about 2.5 cm.</p> <p>In the room dedicated to the Salmi collection (room 17), there is a 15 cm step.</p> <p>Small ramp between room 6 and room 16, length 30 cm, width 120 cm, slope 16%</p>

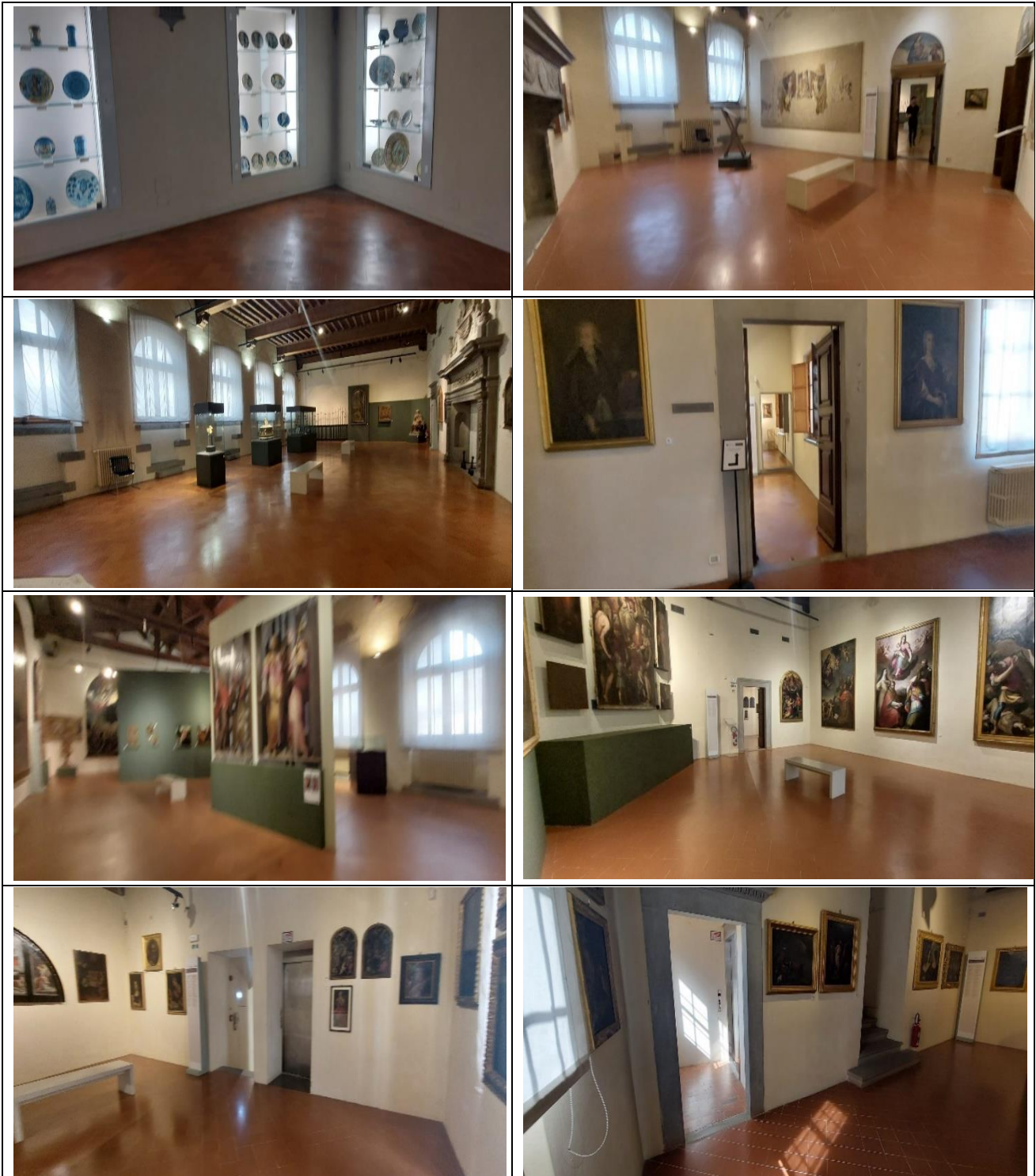




Project promoted by



**Regione Toscana**



Project carried out with the contribution of the



**Presidenza del  
Consiglio dei Ministri**  
Ministro per la disabilità



## Services

### Additional elements

Guided tours for groups	On request. It is also possible to book a private guide service with tourist guides licensed by the Tuscany Region <a href="https://www.regione.toscana.it/-/guide-turistiche-e-ambientali-accompagnatori-turistici-e-guide-alpine">https://www.regione.toscana.it/-/guide-turistiche-e-ambientali-accompagnatori-turistici-e-guide-alpine</a>
Guided tours for individuals	On request. It is also possible to book a private guide service with tourist guides licensed by the Tuscany Region <a href="https://www.regione.toscana.it/-/guide-turistiche-e-ambientali-accompagnatori-turistici-e-guide-alpine">https://www.regione.toscana.it/-/guide-turistiche-e-ambientali-accompagnatori-turistici-e-guide-alpine</a>
Activities for children and families	Not detected
Guided tours with trained staff	NO
Accessible bookshop	Not detected





### Toilets for guests with reduced mobility

Number of <b>accessible toilets</b> for guests with reduced mobility	2. Men and women bathroom
Location	ground floor
How to access the premises	<input checked="" type="checkbox"/> flat
Men's bathroom	
Usable width of the entrance door	Above 90 cm
Toilet height	50 cm

Project carried out with the contribution of the





Toilet seat with open front tooth	NO
Support handles	to the left of the toilet
Flexible shower on the side of the toilet	NO
Free space on the sides of the toilet	left 23 cm right Above 90 cm frontal 93 cm
Electric doorbell/telephone	YES
Washbasin with space underneath for wheelchair approach	68 cm
Height from the ground lower edge mirror	116 cm
Baby changing table	NO
 	
 	
Women's bathroom	
Usable width of the entrance door	Above 90 cm
Toilet height	50 cm
Toilet seat with open front tooth	NO
Support handles	to the left of the toilet
Flexible shower on the side of the toilet	NO
Free space on the sides of the toilet	left Above 90 cm right cm 23 frontal cm99





Electric doorbell/telephone	YES
Washbasin with space underneath for wheelchair approach	69 cm
Height from the ground lower edge mirror	117 cm
Baby changing table	NO
	
	

## Medical practices/healthcare facilities

Hospitals near the property	<p>San Donato Hospital, Via P.Nenni 20 Phone +39 0575 2551</p> <p>Emergency Room, via P. Nenni 22 Phone +39 0575 2551</p>
Other healthcare facilities	<p>Dialysis on holiday, at San Donato Hospital, Arezzo – Pernici Maria Grazia, nursing coordinator Hemodialysis Arezzo, Phone +39 0575 255516 Email: <a href="mailto:mariagrazia.pernici@uslsudest.toscan.it">mariagrazia.pernici@uslsudest.toscan.it</a></p>





Project promoted by



**Regione Toscana**

---

**TESTED BY:** [Handy Superabile Social Promotion Association](#) in 2024

---

Project carried out with the contribution of the



**Presidenza del  
Consiglio dei Ministri**  
Ministro per la disabilità