



Accommodation Sheet

General information

Accommodation Name	Hotel Principe
Typology	Hotel/inn
Address	Viale Ammiraglio Morin, 67
City	Forte dei Marmi (LU)
Contacts	+39 0584 783636
Website	https://www.principefortedeimarmi.com/en
Online reservations	YES
Short description	<p>Forte dei Marmi, a climatic and seaside resort, is one of the most important tourist centers on the Tuscan Riviera, with very long beaches and over 100 bathing establishments which offer tourists a range of choices for relaxation, leisure and entertainment at any time of the year. year.</p> <p>Hotel Principe is characterized by a modern design.</p>

TESTED AND REVIEWED BY: [Handy Superabile Social Promotion Association](#) in 2024

Please note The following information refers to the verification date shown at the bottom of each sheet. The Association is not responsible for any significant changes made to the property after the visit.





Summary

Accommodation Sheet.....	1
General informations.....	1
Arrival at the facility.....	3
How to reach the property.....	3
Pathway from the private/public car park to the entrance	4
Structure entrance	5
Hall - Reception	6
Rooms/apartments	7
Rooms/apartments adapted for guests with reduced mobility.....	7
Toilet in the room for guests with reduced mobility	8
Bar/restaurant.....	10
Common toilets.....	15
Pool.....	16
Recreational activities	17
Wellness center - Spa.....	17
Gym	18
Medical practices/health facilities.....	19





Arrival at the facility

How to reach the property


By car	<p>from the north: FROM GENOA: A12 motorway southbound, exit Versilia.</p> <p>FROM MILAN: A1 motorway southbound near Parma, merge onto the A15 until La Spezia where you merge onto the A12 southbound until the Versilia exit.</p> <p>FROM FLORENCE: A11 Firenze-Mare motorway to Lucca, then take the motorway link road to Viareggio northwards until the Versilia exit.</p> <p>from the south: FROM ROME: A1 motorway to Florence then take the A11 to Lucca, then take the motorway link road to Viareggio northwards until the Versilia exit.</p> <p>From the Versilia exit follow the signs for Forte Dei Marmi</p>
By plane	
Assistance service for people with disabilities	YES
Boarding/disembarking of passengers with reduced mobility	with courtesy chair and ambulift/finger
Tactile itineraries for the blind and visually impaired	YES
There is an accessible toilet room with support handles	YES
On the train	
Nearest station	The Querceta / Seravezza train station is km away. 5 and does not provide assistance service for passengers with disabilities





Assistance service for people with disabilities	NO but it is expected in the Massa and Viareggio stations, 11 and 18 km away respectively
---	---



Pathway from the private/public car park to the entrance

Presence of private parking	YES, for a fee
Presence of parking space reserved for people with disabilities	NO
Type of flooring of the private car park	floor tiles
Public parking nearby	YES
Type of public car park flooring	asphalt
Presence of parking space reserved for people with disabilities in the public car park	YES number. 1
Describe the pathway from the car park to the entrance and any critical issues	flat
Distance from the car park to the entrance	Approximately 30 m
	





Structure entrance

There is an accessible entrance	YES main entrance
Method of access to the structure	<input checked="" type="checkbox"/> flat <input checked="" type="checkbox"/> via 3 steps can be overcome via a ramp with a slope of less than 8%
Type of entrance door	automatic
Useful width of door/entrance passage	greater than 90 cm
There are indicators and tactile maps	NO
	





Hall - Reception

How to reach it from the entrance	flat
Reception desk height	bench exceeding 100 cm
Presence of multilingual staff	YES
Type of information material	<input type="checkbox"/> YES with tactile maps/signals <input checked="" type="checkbox"/> YES with brochure
Initial assistance is provided for visitors with disabilities	<input checked="" type="checkbox"/> YES with orientation tour of the facility <input checked="" type="checkbox"/> YES with room accompaniment <input type="checkbox"/> YES with portage service
The following aids are provided for visitors with disabilities	<input type="checkbox"/> manual wheelchair <input type="checkbox"/> crutches <input type="checkbox"/> comfortable shower chair
The staff followed a training course on welcoming people with various disabilities	NO
	





Rooms/apartments

Rooms/apartments adapted for guests with reduced mobility

Number and type of rooms/apartments equipped/usable by people with reduced mobility	<input checked="" type="checkbox"/> double rooms number 2
Access to the room	<input checked="" type="checkbox"/> flat
Access to the room from the hall	<input checked="" type="checkbox"/> via elevator door width 88 cm, cabin width 147 cm, cabin depth 150 cm, height of the highest keyboard button 127 cm, raised/braille keys
Type of entrance door	Not detected
Useful width of entrance door	85cm
Type and height of bed	single beds 50 cm high
Free spaces at the sides of the bed	to the left 89cm To the right greater than 90 cm Front greater than 90 cm
Wardrobe type	ante
Free space under the desk	70cm
They are available in the room	<input type="checkbox"/> safe <input checked="" type="checkbox"/> mini-bar <input type="checkbox"/> water kettle <input type="checkbox"/> iron
There is a terrace/balcony/garden (useful door width)	Not detected





Toilet in the room for guests with reduced mobility

Access to the venue	flat
Useful width of entrance door	83 cm
Door type	Not detected
WC height	50cm
Toilet seat with open front tooth	NO
Support handles	to the left of the toilet
Flexible shower next to the toilet	YES
Free space on the sides of the toilet	to the left greater than 90 cm To the right 22cm Front greater than 90 cm
Electric bell/telephone next to the toilet	YES
Washbasin with space underneath for a wheelchair	65cm
Height from the ground to the lower edge of the mirror	not sufficient for use by people in a wheelchair





<p>Shower accessible to guests with reduced mobility available</p>	<p>YES flush with the floor</p>
<p>Shower type</p>	<p>with box dimensions 140 cm X 115 cm</p>
<p>Shower chair</p>	<p>missing</p>
<p>Support handle</p>	<p>YES</p>
<p>Presence of shower head or latch</p>	<p>latch with lowest point reachable by a seated person</p>
<p>Electric bell/telephone on the shower side</p>	<p>YES</p>





Bar/restaurant

Type of venue	Restaurant Lux Lucis
Access to the venue	<input checked="" type="checkbox"/> flat <input type="checkbox"/> via sidewalks cm high Choose an item. <input type="checkbox"/> via ramp Choose an item. <input type="checkbox"/> via elevator Choose an item. <input type="checkbox"/> via stairlift
Useful width of door/entrance passage	greater than 90 cm
Bar counter height	greater than 100 cm
Buffet counter height	Not detected
Type of tables	with 4 legged
Space under the floor tables	65cm
Availability of high chairs for newborns	NO
Multilingual menu	YES
Menu with apps	not detected
Braille menu	NO
Table service for people with disabilities	YES
Availability of food for celiacs	<input checked="" type="checkbox"/> bread <input type="checkbox"/> pasta <input checked="" type="checkbox"/> cookies <input type="checkbox"/> ice creams <input type="checkbox"/> pre-packaged foods
There are coffee and milk dispensers	Not detected
It is possible to always reserve the same table for a customer with reduced mobility	YES
There are toilets that can be used by a guest with reduced mobility (see "toilets accessible in internal routes and common services)	YES
There is an area reserved for lunch for younger guests	NO
An equipped baby bottle service is available	NO





<p>The restaurant has an outdoor veranda/dehors</p>	<p>YES with level access</p>
<p>Type of tables</p>	<p>with 4 legged</p>
<p>Space under the floor tables</p>	<p>65cm</p>

<p>Type of venue</p>	<p>Principe Restaurant</p>
<p>Access to the venue</p>	<p><input checked="" type="checkbox"/> flat</p>
<p>Useful width of door/entrance passage</p>	<p>Without door</p>
<p>Type of tables</p>	<p>with 4 legged and central support</p>
<p>Space under the floor tables</p>	<p>69 cm</p>





Availability of high chairs for newborns	Not detected
Multilingual menu	YES
Menu with apps	not detected
Braille menu	NO
Table service for people with disabilities	YES
Availability of food for celiacs	<input type="checkbox"/> bread <input type="checkbox"/> pasta <input type="checkbox"/> cookies <input type="checkbox"/> ice creams <input type="checkbox"/> pre-packaged foods
It is possible to always reserve the same table for a customer with reduced mobility	YES
There are toilets that can be used by a guest with reduced mobility (see "toilets accessible in internal routes and common services)	NO
	
The restaurant has an outdoor veranda/dehors	YES with level access
Type of tables	with 4 legged and central support
Space under the floor tables	69 cm








Type of venue	67 Sky Lounge Bar
Access to the venue	<input checked="" type="checkbox"/> via elevator door width 88 cm, cabin width 147 cm, cabin depth 150 cm, height of the highest keyboard button 127 cm, raised/braille keys
Useful width of door/entrance passage	greater than 90 cm
Bar counter height	greater than 100 cm
Type of tables	Smoking tables
Space under the floor tables	Not detected
Multilingual menu	YES
Menu with apps	not detected
Braille menu	NO
Table service for people with disabilities	YES
It is possible to always reserve the same table for a customer with reduced mobility	YES





	
<p>The restaurant has an outdoor veranda/dehors</p>	<p>YES with level access</p>
	

Type of venue	Pool Bar
Access to the venue	<input checked="" type="checkbox"/> flat
Useful width of door/entrance passage	Without door
Bar counter height	greater than 100 cm
Buffet counter height	missing
Table service for people with disabilities	YES






It is possible to always reserve the same table for a customer with reduced mobility	YES
	

Common toilets

Note	The common toilet is not equipped for guests with reduced mobility
Useful width of entrance door	greater than 90 cm
Door type	Not detected
Handle type	Not detected
WC height	50cm
Toilet seat with open front tooth	NO
Support handles	missing
Flexible shower next to the toilet	NO
Free space on the sides of the toilet	to the left 27cm To the right greater than 90 cm front 20cm
Electric bell/telephone next to the toilet	NO
Washbasin with space underneath for a wheelchair	63 cm





Height from the ground to the lower edge of the mirror	Not detected
Baby changing table	not detected
	

Pool

The property has a swimming pool	for adults with fresh water
Access to the swimming pool	via ramp length 12 m, width 144 cm slope 7%
Useful width of entrance gate	Access via automatic door with opening 150 cm and entrance gate is 85 cm wide
Access to the tub	with ladder
Bathing aids for guests with reduced mobility	not present
Depth of the tank	190 cm
Height of the pool edge - water level	infinity



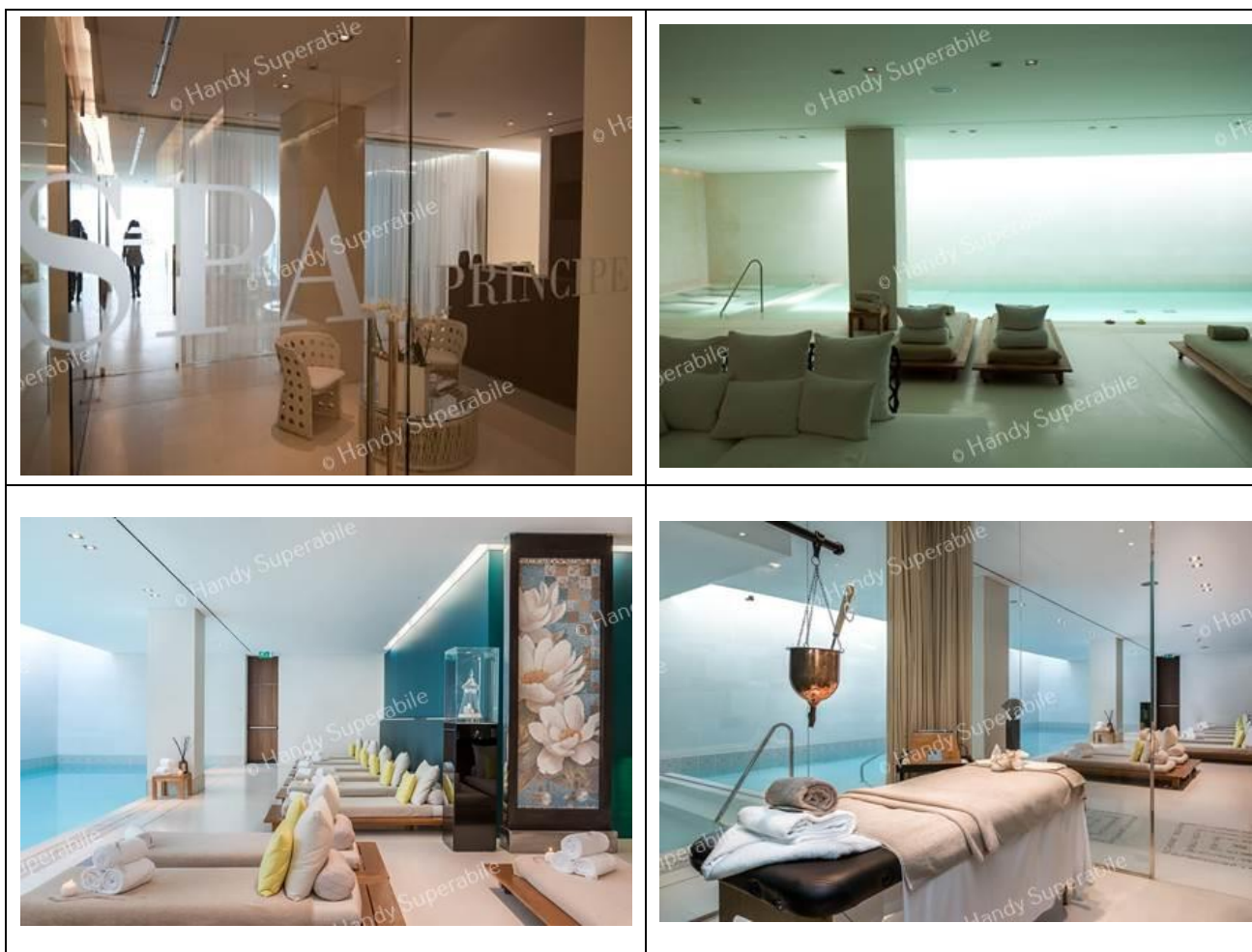


Recreational activities

Wellness center - Spa

There is a wellness centre/spa in the structure	YES
Access mode	flat
Useful width of entrance door	greater than 90 cm
The following activities are available at the wellness centre/Spa	<input checked="" type="checkbox"/> saunaaccessible on level via a door with a useful width greater than 90 cm <input checked="" type="checkbox"/> Turkish bathaccessible on level via a door with a useful width greater than 90 cm <input checked="" type="checkbox"/> massage roomaccessible on level via a door with a useful width greater than 90 cm <input checked="" type="checkbox"/> Jacuzziaccessible via ladder <input checked="" type="checkbox"/> Covered pool
There is an accessible changing room	Not detected





Gym

There is a gym in the structure	YES
Access mode	flat
Useful width of entrance door	greater than 90 cm





Medical practices/health facilities

Hospitals near the facility	Versilia Hospital Via Aurelia n. 335 - 55049 Lido di Camaiore LU Tel +39 0584/6051
Any dialysis facilities	Dialysis service c/o Croce Verde Viale Italico, corner. via Risorgimento Tel. +39 0584 84013
Other healthcare facilities	San Camillo nursing home Via Padre Ignazio da Carrara, 37, Vittoria Apuana Tel +3905847391

TESTED BY: [Handy Superabile Social Promotion Association](#) in 2024

