



## Cultural Site Fact Sheet

Cultural site name	GUINIGI MUSEUM
Type of site	Museum
Address	Via della Quarquonia 4
City	Lucca
Contacts	<b>Telephone:</b> +39 0583 496033 - +39 0583.55570 <b>Email:</b> <a href="mailto:drm-tos.museilucchesi@cultura.gov.it">drm-tos.museilucchesi@cultura.gov.it</a>
Website	<a href="http://www.luccamuseinazionali.it/it/guinigi/museo-nazionale-di-villa-guinigi">http://www.luccamuseinazionali.it/it/guinigi/museo-nazionale-di-villa-guinigi</a>
WCAG 2.1 compliant accessible website	YES

**TESTED BY:** [Handy Superabile Social Promotion Association](#) in summer 2024

**Please note** The following information refers to the date of verification shown at the bottom of each sheet. **The Association** is not responsible for any significant changes made by the property after the visit.

### Summary

Cultural Site Sheet.....	1
Description.....	2
Arrival at the property.....	2
Private/public parking.....	2
Route from the car park to the entrance .....	4
Reception and reception .....	6
Itineraries .....	7
Services .....	10
Additional elements.....	10
Toilets for guests with reduced mobility .....	10
Medical practices/healthcare facilities.....	11

Project carried out with the contribution of the





## Description

The Villa, one of the oldest and most prestigious palaces in the city, was erected starting in 1413.

The National Museum of Villa Guinigi exhibits one of the richest and most interesting collections of works of art produced for Lucca by artists from Lucca or foreigners working in the city for ecclesiastical and secular patrons. The main nucleus of the collections dates back to the periods before and after the unification of Italy, to which were then added finds from excavations in the city. In the rooms of the Villa, which was the home of Paolo Guinigi, lord of Lucca from 1400 to 1430, in late Gothic style, the history of the city is retraced: the itinerary begins from the eighth century BC with the archaeological collection, to arrive at the eighteenth century with works mainly of sacred subjects

## General information

Opening and closing period	All year round
Times	from Tuesday to Saturday from <b>12.00 to 19.30 (last admission 18.00)</b> ; first and third Sunday of the month from <b>9.00 am to 7.30 pm (last admission at 6.00 pm)</b>
Ticket cost	<b>Admission € 4.00</b> Free for people with disabilities and their companions
Online purchase	NO

## Arrival at the property



### Private/public parking

Presence of private parking	YES Mazzini parking in via dei Bacchettoni hourly rate 0.50 euros
Presence of parking space reserved for people with disabilities	NO

Project carried out with the contribution of the








Public parking nearby	YES
Type of flooring in the public car park	asphalt
Presence of parking space reserved for people with disabilities	YES in Via del Bastardo at 50 meters and in Via della Quarquonia at 30 meters
Eventual notes	
	
Via del Bastardo	Quarquonia Route



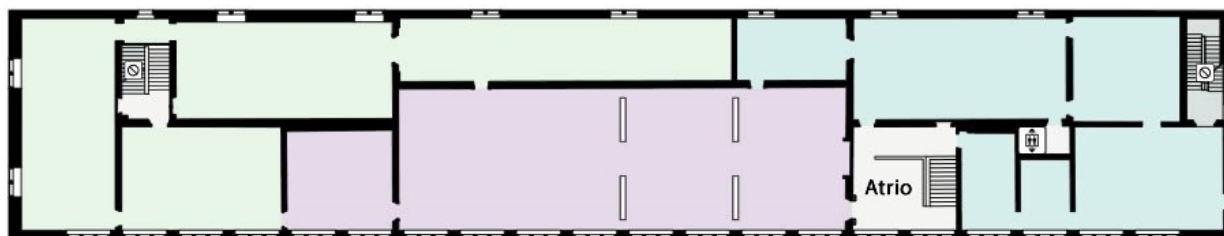


## Route from the car park to the entrance

The property can be reached from the car park	flat
There are indicators and tactile maps	NO
There is an accessible entrance	YES
How to access the site 	<p>From the road you can access the external entrance; from here in the courtyard where the entrance to the ticket office/reception and cloakroom is located, with the equipped toilets on the side; from here you exit and access the garden, via a short concrete ramp with a slope of 10.4%, and a short path in compacted gravel that can be traveled quite easily in a wheelchair; You enter the museum, through a portico, overcoming a ramp with a slope of 9.7%.</p> <p>As soon as we enter, we find on the right the atrium with the elevator that leads to the upper floor</p>
Useful width of door/entrance gate	Above 80 cm
	







PRIMO PIANO

Dal rinascimento alla Controriforma

Dalla Controriforma al Neoclassicismo

Dal Gotico al Rinascimento

Le Civiltà antiche

Dall'Alto Medioevo al Romanico



PIANO TERRENO

Via della Quarquonia

#### Legenda



Biglietteria  
Informazioni  
Guardaroba

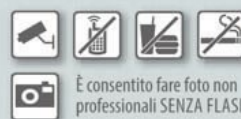


Servizi Igienici



Ascensore  
Zone non accessibili  
Percorso di visita

#### Nel museo



È consentito fare foto non professionali SENZA FLASH





## Reception and Ticket Office

How to access	Flat. From the ticket office you can access the toilets (entrance door 88.5 cm), overcoming two ramps (maximum slope of 10%).
Priority access for visitors with disabilities	YES
Orientation signs	<input type="checkbox"/> Signage with contrasting icons and colors to provide information on accessibility  <input checked="" type="checkbox"/> Orientation signs according to the ISO23601 Safety Identification – Escape and Evacuation Plan Signs  <input type="checkbox"/> directional signs placed at 140/170 cm with contrasting colors  <input checked="" type="checkbox"/> Signs identifying rooms and paths placed at 140/170 cm with contrasting colors
Type of information material	<input type="checkbox"/> Braille guides <input type="checkbox"/> guides in large print <input type="checkbox"/> Facilitated Language Guides (AAC) <input type="checkbox"/> Audio guides <input type="checkbox"/> video guides in LIS or subtitles <input type="checkbox"/> tactile maps <input type="checkbox"/> QR code <input type="checkbox"/> imapp
A cloakroom accessible to visitors with motor disabilities is available	YES
Multilingual staff	YES
The staff followed a training course on welcoming people with different disabilities	NO

Project carried out with the contribution of the





Presence of sign language interpreters	In collaboration with the National Agency for the Deaf, Provincial Section of Lucca, the museum offers, on request, a guided tour in LIS (Italian Sign Language)
Reception desk height	bench over 100 cm
The following aids are available for visitors with disabilities	<input type="checkbox"/> manual wheelchair <input type="checkbox"/> Crutches <input type="checkbox"/> Magnifier <input type="checkbox"/> Tablet with pre-installed app




## Itineraries

Presence of maps	YES
Tactile indicators and tactile maps	NO
Presence of didactic panels	YES
Video guides	NO
Touch models and touchable artworks/replicas	NO
Multimedia workstations accessible from a seated position	NO
Routes dedicated to children	YES The Museum offers children the opportunity to have a tailor-made guide, in order to make the visit to the collections more pleasant and accessible. At the moment you can take advantage of the guide of the archaeological section of the museum, called <u>Ancient Civilizations</u> . You can choose to read the texts while visiting the museum or listen to the narrative voices of those who edited the descriptions.
Stopping points	NO
Route spread over several floors	Ground floor and first floor
How to access the rooms	<input checked="" type="checkbox"/> The rooms are accessible to all without obstacles

Project carried out with the contribution of the





Room Identification	by means of a sign placed about 180 cm from the ground with black text on a white background
<p>Bulletin board/information panels and captions</p> 	<ul style="list-style-type: none"> <li><input checked="" type="checkbox"/> captions placed 95 cm from the ground</li> <li><input checked="" type="checkbox"/> Shadow-free fonts and serifs</li> <li><input type="checkbox"/> easy-to-read text (AAC)</li> <li><input type="checkbox"/> Braille or relief panel positioned 60-100 cm from the ground</li> <li><input checked="" type="checkbox"/> The works on display are described in great detail on signs with black writing on a white background</li> <li><input type="checkbox"/> Panels also written in English</li> </ul>
	

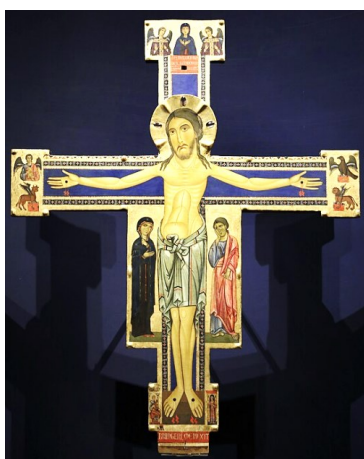




You start by crossing the beautiful well-kept garden and enter the loggia where the museum itinerary begins.

On the ground floor, the exhibition rooms are located inside the two side wings of the building, separated by a large access porch.

On the ground floor there are archaeological finds such as the cinerary vases of the Etruscan necropolis discovered in 1982 in San Concordio, or such as the remains from monuments and houses from the Roman era.



On the first floor (noble floor) are located the remaining museum rooms

In the exhibition rooms there are some ramps with a maximum slope of 10.9% and allow the visitor in a wheelchair to access all the rooms

Here there are thirteenth-century masterpieces such as the *Painted Cross* by **Berlinghiero**, fifteenth-century masterpieces such as the *Pietà* by **Matteo Civitali** and sixteenth-century masterpieces such as the *God the Father between St. Mary Magdalene and St. Catherine of Siena* by **Fra Bartolomeo** or the *Madonna and Child with Saints* by **Amico Aspertini**





## Services

### Additional elements

Guided tours for groups	It is necessary to inform the museum in advance: tel. 0583.496033; e-mail: <a href="mailto:drm-tos.museilucchesi@cultura.gov.it">drm-tos.museilucchesi@cultura.gov.it</a>
Guided tours for individuals	NO
Activities for children and families	YES The Museum offers children the opportunity to have a tailor-made guide, for now of the archaeological section,
Accessible bookshop	NO
Eventual notes	

### Toilets for guests with reduced mobility

Number of <b>accessible toilets</b> for guests with reduced mobility	Museum toilet
Location	On the side of the reception on the ground floor
How to access the premises	<input checked="" type="checkbox"/> flat
Usable door width	> 80 cm
Toilet seat with open front tooth	YES
Toilet height	50 cm
Support handles	YES
Flexible hand shower	
Free space on the sides of the toilet	Sufficient for approaching with a wheelchair
Eventual notes	It has not yet been possible to visit the toilets. We will take care to do it as soon as





---

	possible and update the card with photos as well
--	--

### Medical practices/healthcare facilities

Hospitals near the property	<b>Ospedale San Luca</b> Via Guglielmo Lippi Francesconi, 556, 55100 Lucca LU tel +39 0583970111
Other healthcare facilities	<b>Medical Guard</b> inside the Citadel of Health "Campo di Marte", Building C, ground floor, entrance from via Teodoro Borgognoni, side of the Church of San Marco Tel. 0583 9701 from Monday to Friday from 20.00 to 8.00 Saturday and Sunday 24h

TESTED BY: [Handy Superabile Social Promotion Association](#) in 2024

