



Cultural Site Sheet

Cultural site name	OPERA DEL DUOMO MUSEUM
Type of site	Museum
Address	Piazza Duomo 17
City	Pisa
Contacts	tel +39 050 835011/12 info@opapisa.it accessibility@opapisa.it for information on accessibility
Website	https://www.opapisa.it/visita/museo-dellopera/
WCAG 2.1 compliant accessible website	YES

TESTED BY: [Handy Superabile Social Promotion Association](#) in summer 2024

Please note The following information refers to the date of verification shown at the bottom of each sheet. **The Association** is not responsible for any significant changes made by the property after the visit.

Summary

Cultural Site Sheet.....	1
Description.....	2
Arrival at the property.....	2
Private/public parking.....	2
Route from the car park to the entrance	3
Reception and reception	5
Itineraries	6
Services	13
Additional elements.....	13
Museum Cafeteria	14
Toilets for guests with reduced mobility	15
Medical practices/healthcare facilities.....	18

Project carried out with the contribution of the





Description

The **Opera** del Duomo museum: opened in 1987, it is a gallery of works of art related to the square. Inside the itinerary, completely renovated, it is possible to relive the entire history of the square, its stylistic influences, the original furnishings and the large choirs.

Do not miss the faithful scale reproduction of the Leaning Tower of Pisa, made with 25,000 pieces of Volterra **alabaster**.

The museum also boasts sculptural works of the highest value, such as the bronze doors by Bonanno Pisano for the Cathedral, the "Burgundian" wooden crucifix of the twelfth century, and the Islamic griffin.

General information

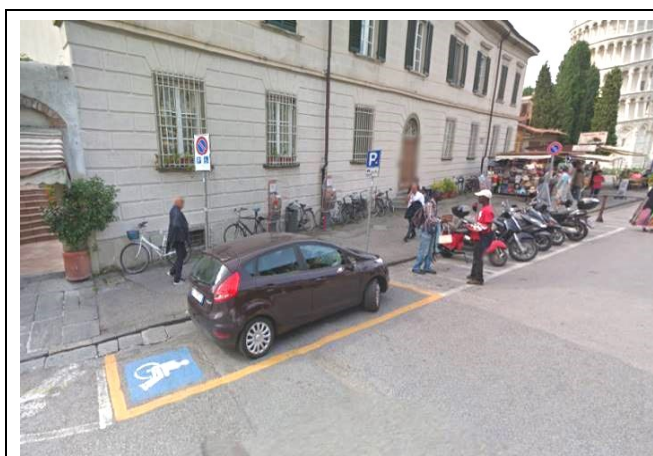
Opening and closing period	All year round
Times	From 9 am to 8 pm
Ticket cost	7 euros – complete tour of the monumental complex 27 euros – free admission for the person with disabilities and the accompanying person
Online purchase	YES

Arrival at the property

Private/public parking

Presence of private parking	NO
Public parking nearby	YES
Type of flooring in the public car park	asphalt
Presence of parking space reserved for people with disabilities	YES. 2 parking spaces in Piazza dell'Arcicovado 150 meters away and 2 in Via Cardinale Maffi 100 meters away, in a limited traffic area
Eventual notes	





Via Cardinale Maffi



Archbishop's Square

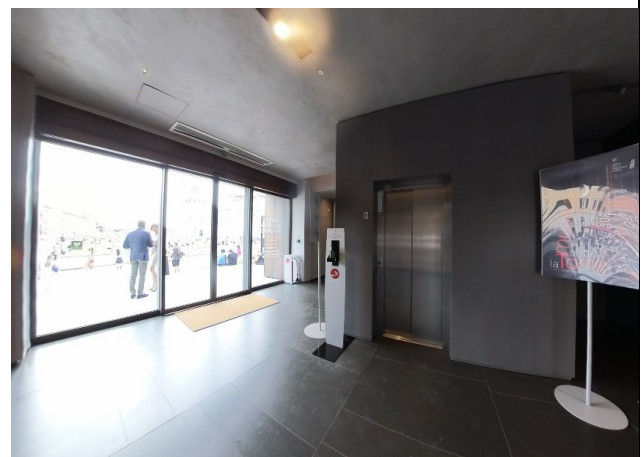
Route from the car park to the entrance

The property can be reached from the car park	Through sidewalks connected to the road surface, 100 meters from the entrance
There are indicators and tactile maps	NO
There is an accessible entrance	YES main entrance
How to access the site	<input checked="" type="checkbox"/> main entrance with 5 steps 16/17 cm high, which can be overcome via a ramp with a first section 146 cm long and a slope of 6/8%, a second section 385 cm long and a slope of 10%, a third section 22.70 m long and a slope of 7%, both with a width of 120 cm and equipped with a curb and hedge on the sides
Useful width of door/entrance gate	Above 90 cm
Type of door	Glass door, sliding
Type of handle	Automatic/Sliding





access ramp with variable slope from 6 to 10%, width 120 cm, equipped with curb and hedge on the sides and large and sliding door



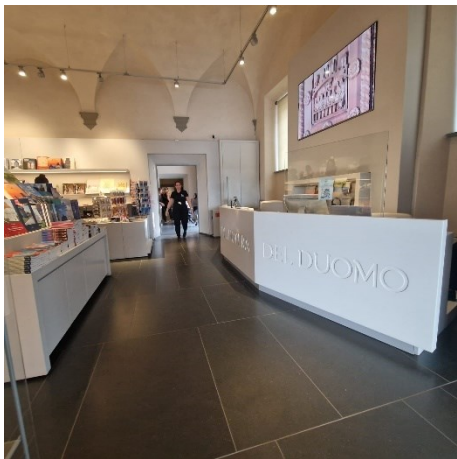



Reception and reception

How to access	Ticket office and reception accessible from the flat entrance. People with disabilities can access all museums and monuments for free, without stopping at the ticket office
Priority access for visitors with disabilities	YES
Orientation signs	<input checked="" type="checkbox"/> Signage with contrasting icons and colors to provide information on accessibility <input checked="" type="checkbox"/> Orientation signs according to the ISO23601 Safety Identification – Escape and Evacuation Plan Signs <input checked="" type="checkbox"/> directional signs placed at 140/170 cm with contrasting colors <input checked="" type="checkbox"/> Signs identifying rooms and paths placed at 140/170 cm with contrasting colors
Type of information material	<input type="checkbox"/> Braille guides <input type="checkbox"/> guides in large print <input type="checkbox"/> Facilitated Language Guides (AAC) <input checked="" type="checkbox"/> Touch audio guide at 74 cm from the ground <input type="checkbox"/> video guides in LIS or subtitles <input type="checkbox"/> tactile maps <input checked="" type="checkbox"/> QR code <input type="checkbox"/> imapp
A cloakroom accessible to visitors with motor disabilities is available	NO
Multilingual staff	YES








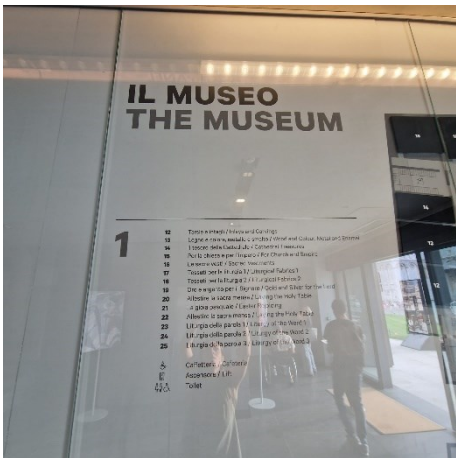
The staff followed a training course on welcoming people with different disabilities	YES
Presence of sign language interpreters	NO
Reception counter height	108 cm
The following aids are available for visitors with disabilities	<input checked="" type="checkbox"/> Manual wheelchair number 2 <input type="checkbox"/> Crutches <input type="checkbox"/> Magnifier <input type="checkbox"/> Tablet with pre-installed app
	
Eventual notes	

Itineraries

Presence of maps	YES
Tactile indicators and tactile maps	NO
Presence of didactic panels	YES
Video guides	NO
Touch models and touchable artworks/replicas	NO
Multimedia workstations accessible from a seated position	YES







	
<p>Routes dedicated to children</p>	<p>NO</p>
<p>Stopping points</p>	<p>YES</p>
<p>Route spread over several floors</p>	<p>YES 2 floors with upper floor accessible by elevator at the entrance with useful door width 80 cm, width X cabin depth: 105 X 125 cm, height of the highest key internal keypad 104 cm in Braille/relief</p>
	





	
Usable width of door/entrance gate/corridors	Above 90 cm
Room Identification	without identification sign
Bulletin board/information panels and captions	<ul style="list-style-type: none"> <input checked="" type="checkbox"/> captions placed 95 cm from the ground <input checked="" type="checkbox"/> Shadow-free fonts and serifs <input type="checkbox"/> easy-to-read text (AAC) <input type="checkbox"/> Braille or relief panel positioned 60-100 cm from the ground <input checked="" type="checkbox"/> The works on display are described in great detail on signs with black writing on a white background <input checked="" type="checkbox"/> Panels also written in English

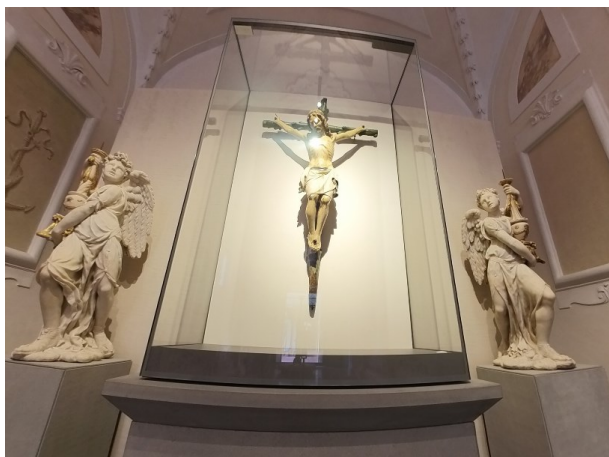




The path opens on the ground floor with the Porta di San Ranieri, built by Bonanno Pisano at the end of the twelfth century; A copy is exhibited in the transept of the Pisan cathedral.

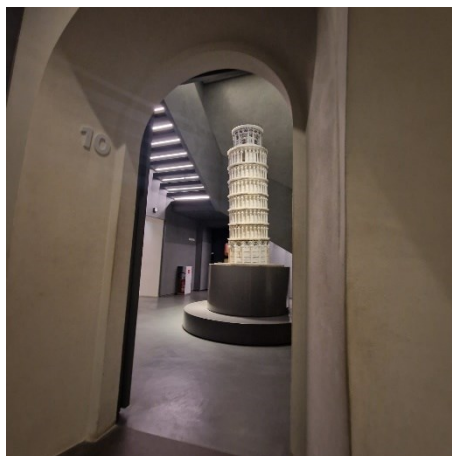
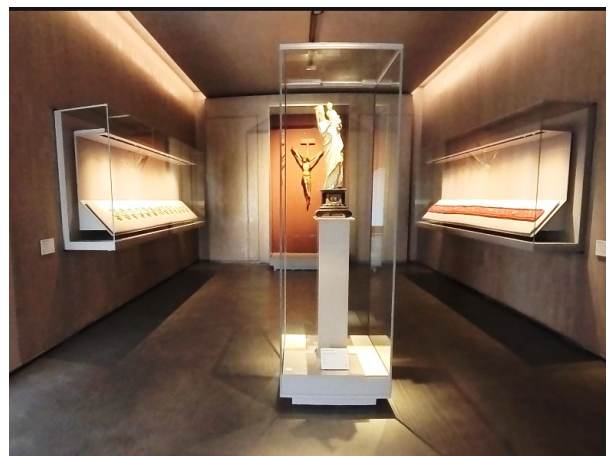
This is followed by a room dedicated to the Cathedral in the Romanesque age, of which the façade marbles and interior furnishings are presented, thus moving on to the Baptistry and its sculptural decoration of the Gothic age and the full-length statues. The Islamic griffin that is found in copy on the apse tympanum of the Cathedral is suggestive.





In the penultimate room on the ground floor, marbles and bronzes pay homage to the wooden Crucifix painted in the early fifteenth century.

Next we find the Tower room. A very faithful scale reproduction of the Tower of Pisa, made with 25,000 pieces of Volterra **alabaster**.



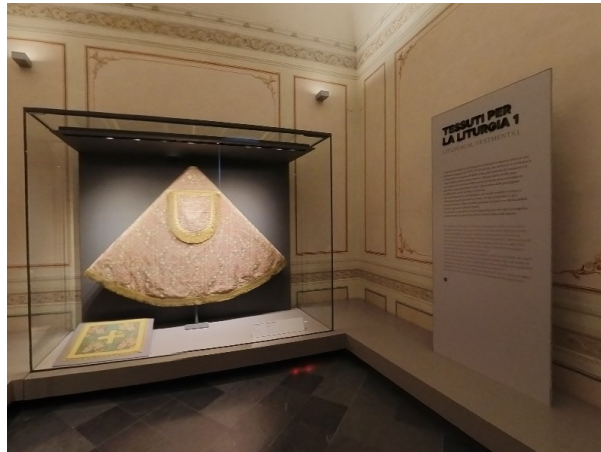
Taking the elevator, we go up to the first floor dedicated above all to interior furnishings and sacred vestments.

On this floor there are several communicating rooms with unobstructed flat paths for those in wheelchairs.

From room 15 to room 25 we find a ramp 6 meters long, 136 cm wide and with a slope of 6.3%.

Only 2 rooms are connected by 2 steps that can be overcome alternatively from another room via a short ramp 55 cm long.





On the first floor we find the furnishings of the wooden choir of the Cathedral as well as the fabrics and goldsmiths gathered around the insignia and funeral drape of Emperor Henry VII.

From here on there are three rooms dedicated to liturgical vestments and as many dedicated to sacred vessels.

The visitor can also admire the liturgical books in these spaces.



The museum itinerary does not end here. Exiting into the loggia, through a flat access door, the visitor can admire the Tower and the Cloister where classical music events are also proposed, as on the day of the visit. On this floor there is the cafeteria accessible via a short ramp and also directly accessible from the ground floor via a second large elevator that is located just inside on the left.






	<p>We return to the ground floor, by elevator and exit, through the large door, towards the cloister, which can be walked on the flat without obstacles.</p> <p>Here the visitor is offered the opportunity to admire some of the colossal busts, by Giovanni Pisano, of the crowning of the Baptistery, aligned along the left wall, within compartments.</p>
<p>Eventual notes</p>	






Services

Additional elements

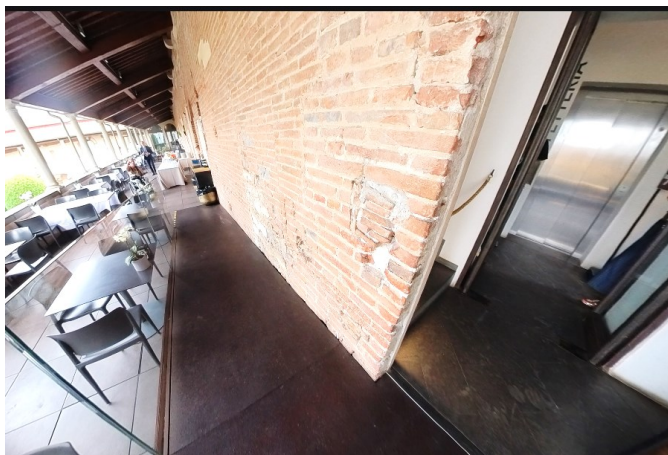
Guided tours for groups	YES
Guided tours for individuals	NO
Activities for children and families	NO
Guided tours with trained staff	<input type="checkbox"/> in sign language <input checked="" type="checkbox"/> for visitors with reduced mobility <input type="checkbox"/> in Facilitated Language (AAC)
Accessible bookshop	<input type="checkbox"/> flat <input checked="" type="checkbox"/> The book shop is located on the floor of the cinema room accessible via 3 steps that can be overcome via a ramp at the entrance on the right, 490 cm long, 80 cm wide, with a slope of 10.3% and handrail on the left
	
Eventual notes	



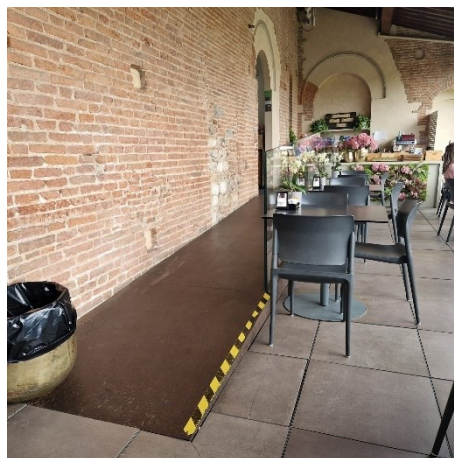
Museum Cafeteria

Type of room and name	Panoramic Terrace Cafeteria
How to access the premises	<input checked="" type="checkbox"/> Reachable by elevator, which is located on the left, as soon as you enter the museum, and descending ramp 540 cm long, 118 cm wide, slope 6.8%, or directly from the Panoramic Terrace which is located on the first floor via a ramp 121 cm long, width greater than 90 cm, slope 3.8%
Useful width of door/entrance gate	Above 80 cm
Type of door	sash
Types of tables	in the 4-stem outdoor area with space underneath more than 65 cm
Braille menu	NO
Table service for people with disabilities	YES
 <p>Elevator leading to the Cafeteria</p>	elevator at the entrance with usable door width 80 cm, width X car depth: 105 X 125 cm, height of the highest key internal keypad 104 cm in braille/relief





Exit the elevator and ramp down



Ramp to reach lift



From the panoramic terrace
short ramp to access the Dehor

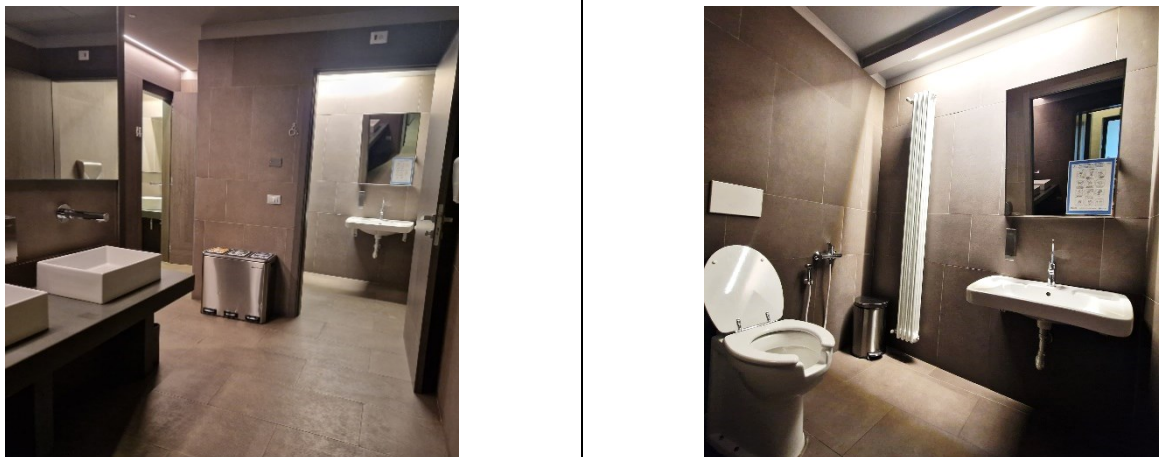


Toilets for guests with reduced mobility

Number of accessible toilets for guests with reduced mobility	2
Location	On the ground floor
How to access the premises	<input checked="" type="checkbox"/> flat



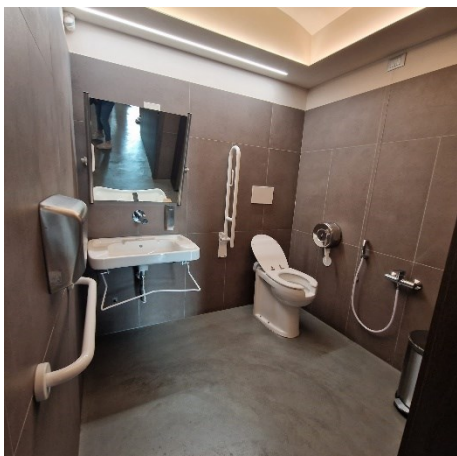


Usable width of the entrance door	of the anteroom greater than 90 cm and of the bathroom 90 cm
Toilet height	50 cm
Toilet seat with open front tooth	YES
Support handles	to the right of the toilet
Flexible shower on the side of the toilet	YES
Free space on the sides of the toilet	left 26 cm right Above 90 cm frontal 92 cm
Electric doorbell/telephone	NO
Washbasin with space underneath for wheelchair approach	70 cm
Height from the ground lower edge mirror	not sufficient for use by a person in a wheelchair
Baby changing table	NO
	

Number of accessible toilets for guests with reduced mobility	2
Location	On the upper floor accessible by elevator
How to access the premises	<input checked="" type="checkbox"/> flat
Usable width of the entrance door	of the anteroom greater than 90 cm and of the bathroom 90 cm
Toilet height	50 cm





Toilet seat with open front tooth	YES
Support handles	to the right of the toilet
Flexible shower on the side of the toilet	YES
Free space on the sides of the toilet	left 93 Cm right 36 Cm frontal Above 90 cm
Electric doorbell/telephone	NO
Washbasin with space underneath for wheelchair approach	65 cm but with a bar underneath that adjusts the inclination of the washbasin but which can hinder the approach
Height from the ground lower edge mirror	sufficient for use by a person in a wheelchair as it can be reclined
Baby changing table	NO
	





Medical practices/healthcare facilities

Hospitals near the property	<p>Cisanello Hospital Emergency Room 050 992300 (it is active from 8.00 in the morning to 01.00 at night, after this time the Emergency Room can be contacted through the switchboard) Toll-free number 800.015877 Switchboard 050.992111</p> <p>S. Chiara Hospital Via Savi Pisa</p>
Other healthcare facilities	<p>Dialysis services on holiday in the period June – September, with 6 beds (Monday, Wednesday, Friday) in the evening (18.00-24.00)tel. 0039 050 997250 – 997253 – 997256 nefrotrap.pisa@ao-pisa.toscana.it</p>

TESTED BY: [Handy Superabile Social Promotion Association](#) in 20

