



Cultural Site Sheet

Cultural site name	Museum of Natural History
Type of site	Museum
Address	Strada Corsini 5
City	Grosseto
Contacts	Tel +39 0564 485771 Email: info@museonaturalemaremma.it
Website	www.museonaturalemaremma.it
WCAG 2.1 compliant accessible website	NO

TESTED BY: [Handy Superabile Social Promotion Association](#) in summer 2024

Please note The following information refers to the date of verification shown at the bottom of each sheet. **The Association** is not responsible for any significant changes made by the property after the visit.

Summary

Cultural Site Sheet.....	1
Arrival at the property.....	4
Private/public parking.....	4
Pathway from the car park to the entrance	4
Reception	6
Itineraries	8
Services	14
Additional elements.....	14
Toilets for guests with reduced mobility	15
Medical practices/healthcare facilities.....	17

Project carried out with the contribution of the





Description

The natural history museum is set up on three floors and consists of twelve exhibition rooms located on the first and second floors. The exhibition rooms are divided into two large sections: the one dedicated to earth sciences and the one dedicated to life sciences.

EARTH SCIENCES

Minerals and Rocks Room

It exhibits the collection of minerals with finds from Monte Amiata, Metalliferous Hills, other areas of the Maremma and neighboring areas (upper Lazio and the island of Elba).

Paleontology Room

It deals with the role and importance of fossils, and the great stages of the chronology of events characterizing the natural history of the Maremma territory.

TREE OF THE DIVERSITY OF THE LIVING

The connection between the earth sciences and life sciences sections houses an ideal tree of the living, with a black wall animated by fluorescent drawings representing the main groupings recognized by science

LIFE SCIENCES

Room of coastal and hilly environments: Deals with aspects of natural life in the coastal and hilly areas of southern Tuscany.

High Hill and Mountain Rooms Room: This room explores the environments of high-hill and mountain areas.

Introduction to the ecological path: A first showcase deals with river environments, while the rest of the room deals with the main groups of Vertebrates present in the Province of Grosseto

Educational island: Structure formed by a panel, a table and some cube-shaped seats, giving visitors (mostly schools) the opportunity to view and touch the samples belonging to the educational collections, under the supervision of a specialized operator.

Special exhibit: the underground rooms Corridor entirely incorporated in a full-scale reconstruction of a cave





General information




Opening and closing period	Closed 25 December, 1 January, 1 May and every Monday
Times	<p>Summer opening hours from 15 June to 30 September Tuesday, Wednesday, Friday and Saturday from 11.00 am to 3.00 pm Thursday, Sunday and holidays from 5.00 pm to 8.00 pm</p> <p>Winter opening hours from 1 October to 14 June Thursday, Friday, Saturday, Sunday and holidays from 10.00 to 13.00 and from 16.00 to 19.00</p>
Ticket cost	5 Euro
Reductions	<p>3 Euros (university students, children and young people from 6 to 18 years old, over 65 years old, organized groups of at least 15 military people, affiliated organizations or associations)</p> <p>School groups with guide 2 Euro, without guide 3 Euro</p> <p>Families 12 Euro</p> <p>Free under 6 years old, tour guides teachers</p>
Online purchase	No
Pet access	Not detected





Arrival at the property

Private/public parking



Presence of private parking	NO
Public parking nearby	YES
Type of flooring in the public car park	asphalt
Presence of parking space reserved for people with disabilities	SI num. 1
	
	

Pathway from the car park to the entrance

The property can be reached from the car park	flat
Distance from parking to entrance	From 20 meters to 300 meters
There are indicators and tactile maps	NO





There is an accessible entrance	YES main entrance
How to access the site	<p><input checked="" type="checkbox"/> via 12 steps can be overcome by stairlift or alternatively 470 cm long ramp with a steep slope of 35%</p> <p>Alternatively, for a guest with motor disabilities, there is an entrance on the right side, located in Via dell'Unione, at no. 48 through a two-leaf door with a useful width of 78 cm X 2 and a 22 cm high step, which can be overcome by a ramp 140 cm long, 90 cm wide, with a slope of 12%</p>
Useful width of door/entrance gate	80 cm
Type of door	revolving door with 4 cm threshold step and passage of more than 80 cm or door with leaves with 2 cm threshold
Type of handle	lever
	







Reception

How to access	flat
Priority access for visitors with disabilities	YES
Orientation signs	<input checked="" type="checkbox"/> directional signs placed at 140/170 cm with contrasting colors <input checked="" type="checkbox"/> Signs identifying rooms and paths placed at 140/170 cm with contrasting colors
Type of information material	<input type="checkbox"/> Braille guides <input type="checkbox"/> guides in large print <input type="checkbox"/> Facilitated Language Guides (AAC)

Project carried out with the contribution of the





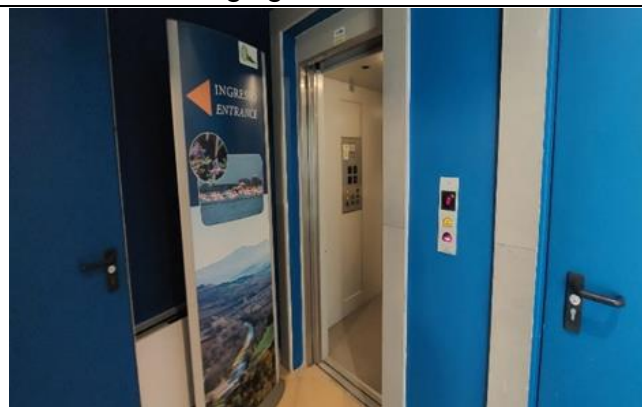
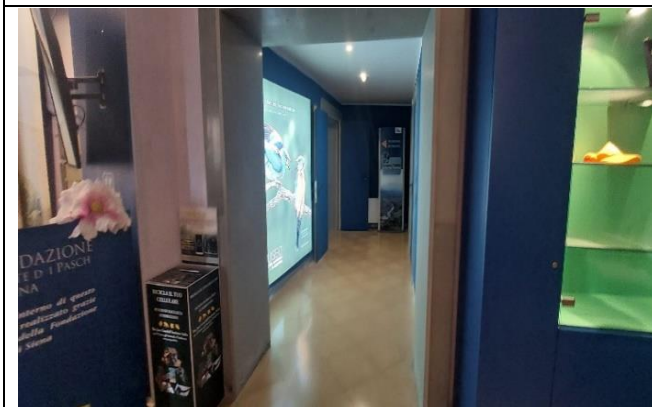
	<input checked="" type="checkbox"/> Audio guides <input type="checkbox"/> video guides in LIS or subtitles <input type="checkbox"/> tactile maps <input checked="" type="checkbox"/> QR code <input type="checkbox"/> imapp
A cloakroom accessible to visitors with motor disabilities is available	YES
Multilingual staff	YES
The staff followed a training course on welcoming people with different disabilities	YES
Presence of sign language interpreters	NO
Reception desk height	with a lowered bench part of less than 100 cm
The following aids are available for visitors with disabilities	<input type="checkbox"/> manual wheelchair <input type="checkbox"/> Crutches <input type="checkbox"/> Magnifier <input type="checkbox"/> Tablet with pre-installed app
Eventual notes	On the same floor as the ticket office is the conference room.
	





Itineraries

Presence of maps	YES
Touch indicators and visual-touch maps	NO
Presence of didactic panels	YES
Audio guide	YES
Touch Models	NO
Multimedia workstations accessible from a seated position	YES with keypad placed 117 cm from the ground
Routes dedicated to children	YES
Stopping points	YES
Route spread over several floors	YES no. 2 floors
Access to the starting point of the route	on the flat and elevator. The raised call button is placed at a height of 115 cm. Sliding cab door with a width of 90 cm. Internal width of 137 cm and depth of 150 cm. Height of the highest button on the keyboard 118 cm and braille and raised keys. The cab is equipped with a grab handle. Warning light.





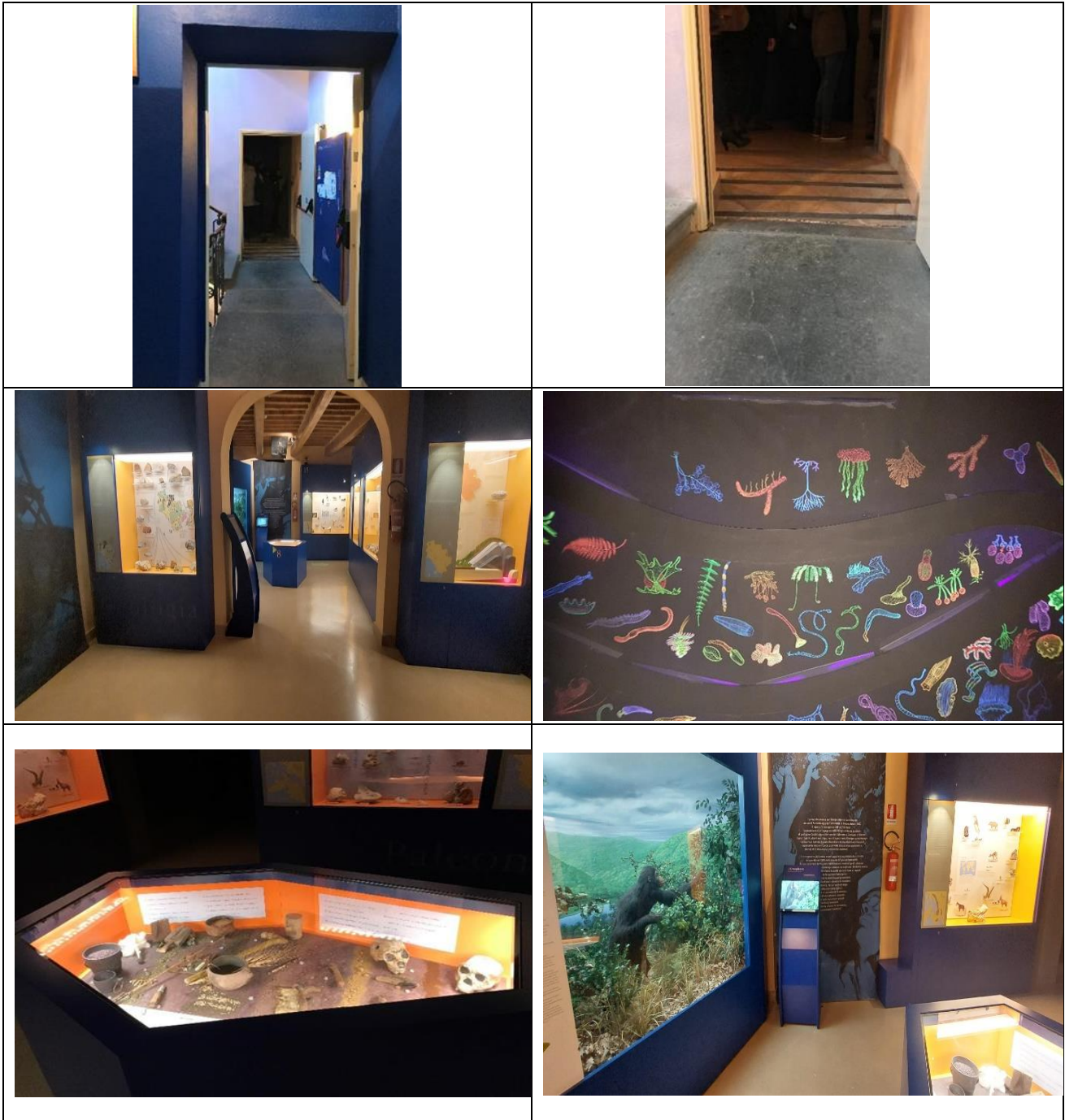
<p>How to access the rooms. Floor 1 : Minerals and Rocks, Paleontology and Life Sciences Room (Water Room)</p>	<p><input checked="" type="checkbox"/> by elevator Exiting the elevator, on the first floor, to reach the exhibition rooms, you have to cross a corridor that opens onto the stairs, and a cm wide passage with ramp at non-slip, 114 cm wide, 63 cm long. with a slope of 18 %.</p>
<p>Usable width of door/entrance gate/corridor</p>	<p>Above 90 cm</p>
<p>Room Identification</p>	<p>By sign</p>
<p>Bulletin board/information panels and captions</p>	<p><input checked="" type="checkbox"/> captions positioned about 100/140 cm from the ground and touchscreen with ground clearance from 117 to 140 cm</p> <p><input checked="" type="checkbox"/> Shadow-free fonts and serifs</p> <p><input type="checkbox"/> Panels also written in English</p>



Project promoted by



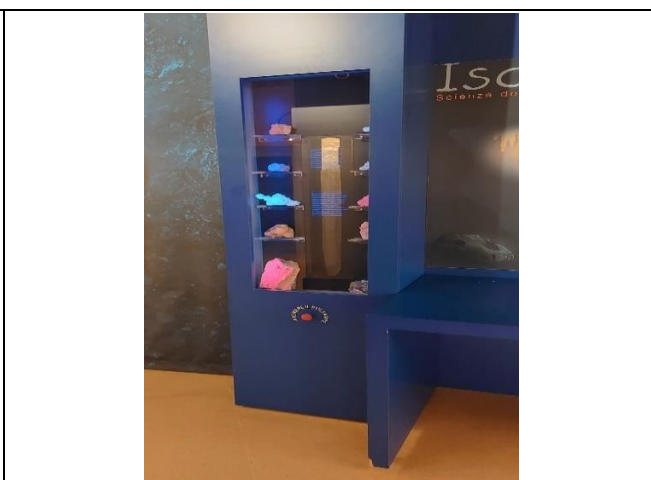
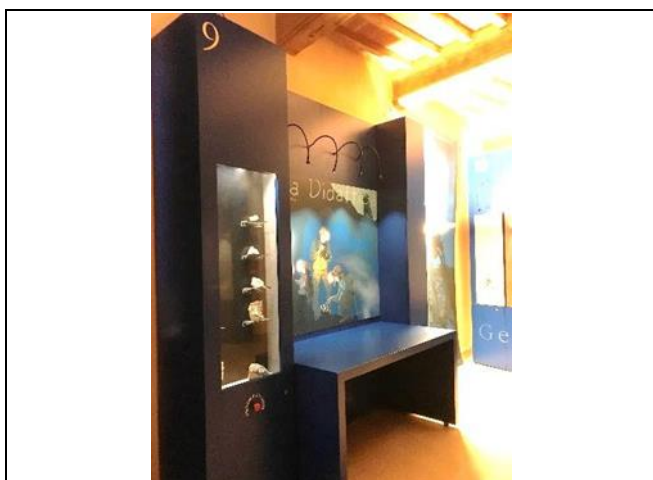
Regione Toscana



Project carried out with the contribution of the



Presidenza del
Consiglio dei Ministri
Ministro per la disabilità



Possible notes :

The *Life Sciences* section exhibits to the visitor models set in their elective habitat, starting from the large WATER ROOM, in which the sea, the coast and the coastal wetlands are represented, reachable via a staircase with 7 steps, which can be overcome by a stairlift for visitors with motor disabilities. The room also includes the upper floor with the scenic effect of reproductions of suspended dolphins to be admired through.





<p>Water room on the 2nd floor. View from above.</p>	
<p>How to access the rooms. Floor 2: room for coastal and hilly environments and high mountain hills. Reconstruction of a cave</p>	<p><input checked="" type="checkbox"/> by elevator Exiting the lift, you must pass a short corridor with a 110 cm wide passage and a non-slip ramp, 143 cm long, 110 cm wide, with a slope of 14.5%. Svoltando a destra, superata una seconda rampa lunga 160 cm, con pendenza 6%</p>
<p>Usable width of door/entrance gate/corridor</p>	<p>Above 90 cm</p>
<p>Room Identification</p>	<p>By means of an identification sign</p>
<p>Bulletin board/information panels and captions</p>	<p><input checked="" type="checkbox"/> captions positioned about 100/140 cm from the ground and touchscreen with ground clearance from 117 to 140 cm</p> <p><input checked="" type="checkbox"/> Shadow-free fonts and serifs</p>



Project promoted by



Regione Toscana



Project carried out with the contribution of the




Presidenza del
Consiglio dei Ministri
Ministro per la disabilità



Services



Additional elements

Guided tours for groups	YES
Guided tours for individuals	YES
Activities for children and families	YES
Guided tours with trained staff	<input type="checkbox"/> in sign language <input checked="" type="checkbox"/> for visitors with reduced mobility <input type="checkbox"/> in Facilitated Language (AAC)
Accessible bookshop	<input checked="" type="checkbox"/> flat <input type="checkbox"/> via ramp Choose an item.
Eventual notes	The bookshop is currently under construction.
	





Toilets for guests with reduced mobility

Number of accessible toilets for guests with reduced mobility	2. 1 on the ground floor, 1 on the second floor
Toilet location	ground floor
How to access the premises	<input checked="" type="checkbox"/> flat
Usable width of the entrance door	Above 90 cm
Toilet height	50 cm
Toilet seat with open front tooth	YES
Support handles	to the left of the toilet
Flexible shower on the side of the toilet	NO
Free space on the sides of the toilet	left 27 cm right Above 90 cm frontal Above 90 cm
Electric doorbell/telephone	YES
Washbasin with space underneath for wheelchair approach	67 cm
Height from the ground lower edge mirror	Cm
Baby changing table	NO
	





<p>Toilet location</p>	<p>Second floor</p>
<p>How to access the premises</p>	<p><input checked="" type="checkbox"/> flat</p>
<p>Usable width of the entrance door</p>	<p>Double door with usable width of 90 cm and 80 cm</p>
<p>Toilet height</p>	<p>50 cm</p>
<p>Toilet seat with open front tooth</p>	<p>YES</p>
<p>Support handles</p>	<p>on both sides</p>
<p>Flexible shower on the side of the toilet</p>	<p>NO</p>
<p>Free space on the sides of the toilet</p>	<p>left 27 cm right Above 90 cm frontal Above 90 cm</p>
<p>Electric doorbell/telephone</p>	<p>YES</p>
<p>Washbasin with space underneath for wheelchair approach</p>	<p>74 cm</p>
<p>Height from the ground lower edge mirror</p>	<p>sufficient for use by a person in a wheelchair</p>
<p>Baby changing table</p>	<p>NO</p>





Medical practices/healthcare facilities

Hospitals near the property	Misericordia Grosseto Hospital Via Senese 161, phone +39 0564485111
Other healthcare facilities	<p>Information point, toll-free number 8006133, open Monday to Friday from 8.00 a.m. to 6.00 p.m., Saturday and Sunday from 9.00 a.m. to 1.00 p.m.</p> <p>Nephrology and Dialysis Unit c/o Grosseto Hospital telephone +39 0564 485159 email alberto.papi@uslsudest.toscana.it</p>

TESTED BY: [Handy Superabile Social Promotion Association](#) in 2024

Project carried out with the contribution of the



Project promoted by



Regione Toscana

Project carried out with the contribution of the



**Presidenza del
Consiglio dei Ministri**
Ministro per la disabilità