



Cultural Site Fact Sheet

Cultural site name	Museum of the Twentieth Century and the Contemporary of Palazzo Fabroni
Type of site	Museum
Address	Via Sant'Andrea 18 – Pistoia
City	Pistoia
Contacts	tel. 0573 371817 musei@comune.pistoia.it
Website	https://musei.comune.pistoia.it/rete-museale/museo-di-palazzo-fabroni/
WCAG 2.1 compliant accessible website	NO

TESTED BY: [Handy Superabile Social Promotion Association](#) in 2024

Please note The following information refers to the date of verification shown at the bottom of each sheet. **The Association** is not responsible for any significant changes made by the property after the visit.

Summary

Cultural Site Sheet.....	1
Description.....	2
Arrival at the property.....	2
Private/public parking.....	2
Route from the car park to the entrance	3
Reception and reception	4
Itineraries	6
Services	10
Additional elements.....	10
Toilets for guests with reduced mobility	11
Medical practices/healthcare facilities.....	12

Project carried out with the contribution of the





Description

the Museum of the Twentieth Century and the Contemporary of Palazzo Fabroni, named after the noble Pistoia family who lived there until 1842, exhibits the permanent collection of modern and contemporary art of the Municipality of Pistoia which allows an itinerary through the artistic panorama from the twenties of the twentieth century to the present day

General information

Opening and closing period	Always open closed on Mondays
Times	Summer from Tuesday to Friday 15/19 and Saturday, Sunday and holidays 11/19 Winter from Tuesday to Friday 10 am to 2 pm and Saturday Sunday and holidays 10 am to 6 pm Christmas and New Year's Eve 16/19 Closed on Mondays Hours may vary annually
Ticket cost	Full price 3,50 € - reduced 2 € free for people with reduced mobility
Online purchase	NO

Arrival at the property

Private/public parking

Public parking nearby	YES
Type of flooring in the public car park	asphalt
Presence of parking space reserved for people with disabilities	YES
Eventual notes	





	<p>2 reserved parking spaces in via S. Andrea in front of the entrance</p>
--	--

Route from the car park to the entrance

The property can be reached from the car park	flat
There are indicators and tactile maps	NO
There is an accessible entrance	YES main entrance
How to access the site	<input checked="" type="checkbox"/> from the external entrance in via S. Andrea via an external ramp 103 cm long, slope 14 % while the external entrance from via Santa is flat and the internal entrance is accessible via a ramp about 250 cm long, slope 6 %
Useful width of door/entrance gate	Choose an item.
Type of door	double-leaf glass with 3 cm internal step
Type of handle	Choose an item.
Eventual notes	





External entrance from Via Santa



Internal entrance from Via Santa



External entrance from via S. Andrea



Internal entrance from via S. Andrea

Reception

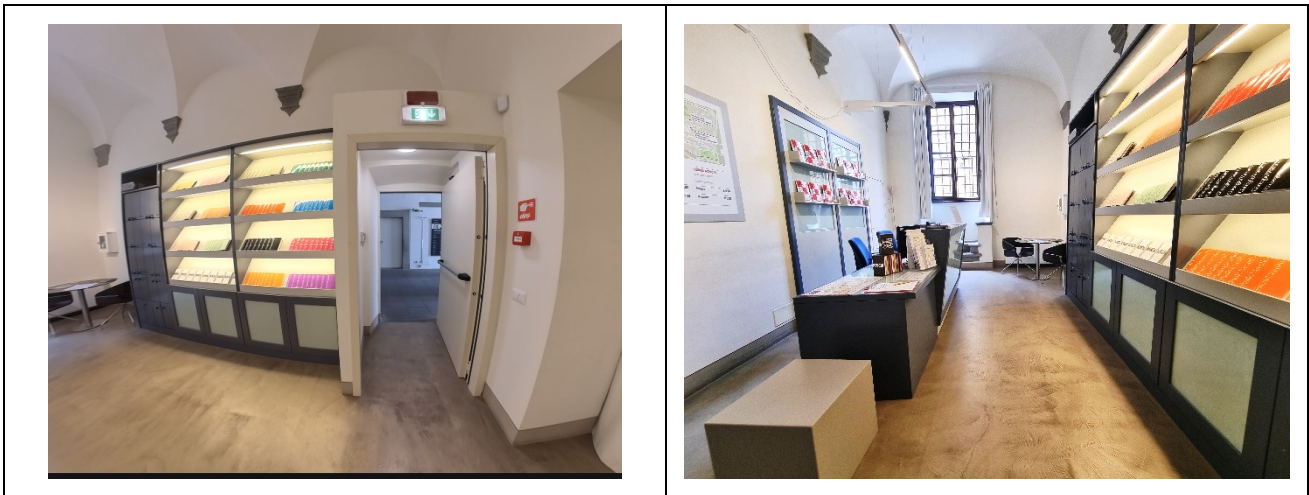
How to access	flat
Priority access for visitors with disabilities	YES
Orientation signs	<input checked="" type="checkbox"/> Signage with contrasting icons and colors to provide information on accessibility





	<input checked="" type="checkbox"/> Orientation signs according to the ISO23601 Safety Identification – Escape and Evacuation Plan Signs <input checked="" type="checkbox"/> directional signs placed at 140/170 cm with contrasting colors <input checked="" type="checkbox"/> Signs identifying rooms and paths placed at 140/170 cm with contrasting colors
Type of information material	<input type="checkbox"/> Braille guides <input type="checkbox"/> guides in large print <input type="checkbox"/> Facilitated Language Guides (AAC) <input type="checkbox"/> Audio guides <input type="checkbox"/> video guides in LIS or subtitles <input type="checkbox"/> tactile maps <input type="checkbox"/> QR code <input type="checkbox"/> imapp
A cloakroom accessible to visitors with motor disabilities is available	NO
Multilingual staff	YES
The staff followed a training course on welcoming people with different disabilities	NO
Presence of sign language interpreters	NO
Reception desk height	bench over 100 cm
The following aids are available for visitors with disabilities	<input type="checkbox"/> manual wheelchair <input type="checkbox"/> Crutches <input type="checkbox"/> Magnifier <input type="checkbox"/> Tablet with pre-installed app





Museum Tour

Presence of maps	NO
Touch indicators and visual-touch maps	NO
Presence of didactic panels	YES
Video guides	YES
Touch models and touchable artworks/replicas	NO
Multimedia workstations accessible from a seated position	YES different

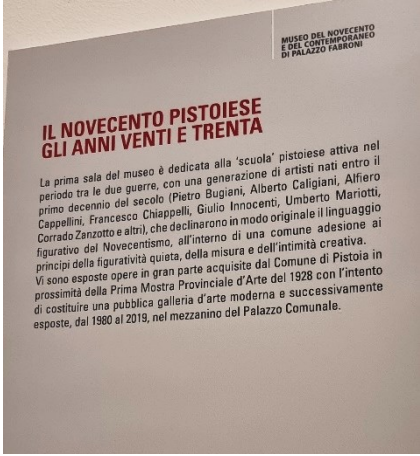







	<p>Multimedia stations</p>
<p>Routes dedicated to children</p>	<p>NO</p>
<p>Stopping points</p>	<p>YES</p>
<p>Route spread over several floors</p>	<p>NO</p>
<p>How to access the rooms</p>	<p><input checked="" type="checkbox"/> on level ground or via moderately sloping ramps</p>
<p>Usable width of door/entrance gate/corridor</p>	<p>Above 90 cm</p>
<p>Room Identification</p>	<p>by means of a sign placed 100/140 cm from the ground with black text color on a white background or white on a black background</p>
<p>Bulletin board/information panels and captions</p>	<p><input checked="" type="checkbox"/> captions positioned 110/150 cm from the ground</p> <p><input type="checkbox"/> Shadow-free fonts and serifs</p> <p><input type="checkbox"/> easy-to-read text (AAC)</p> <p><input type="checkbox"/> Braille or relief panel positioned 60-100 cm from the ground</p> <p><input checked="" type="checkbox"/> Black contrasted font on white background</p> <p><input type="checkbox"/> Panels also written in English</p>



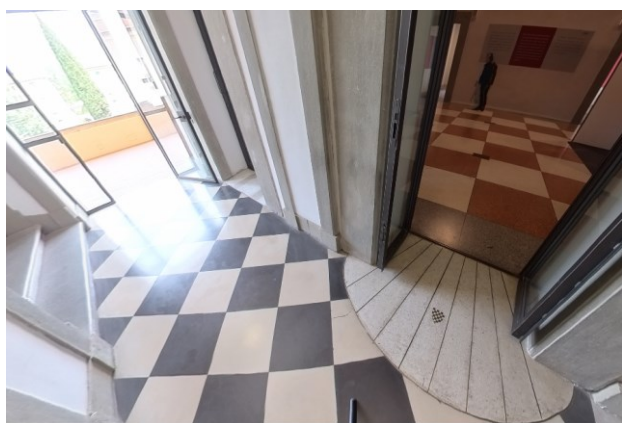


	<p>captions positioned at 110/150 cm from the ground with contrasting black font on a white background</p>
	<p>The museum itinerary, ordered chronologically, begins from the rooms on the ground floor where, in addition to the spaces reserved for welcoming the public with an informative video installation on the history of the building and its collections up to the new garden, there is the section dedicated to the twentieth century Pistoia art from the second half of the twenties to the end of the sixties.</p>
	





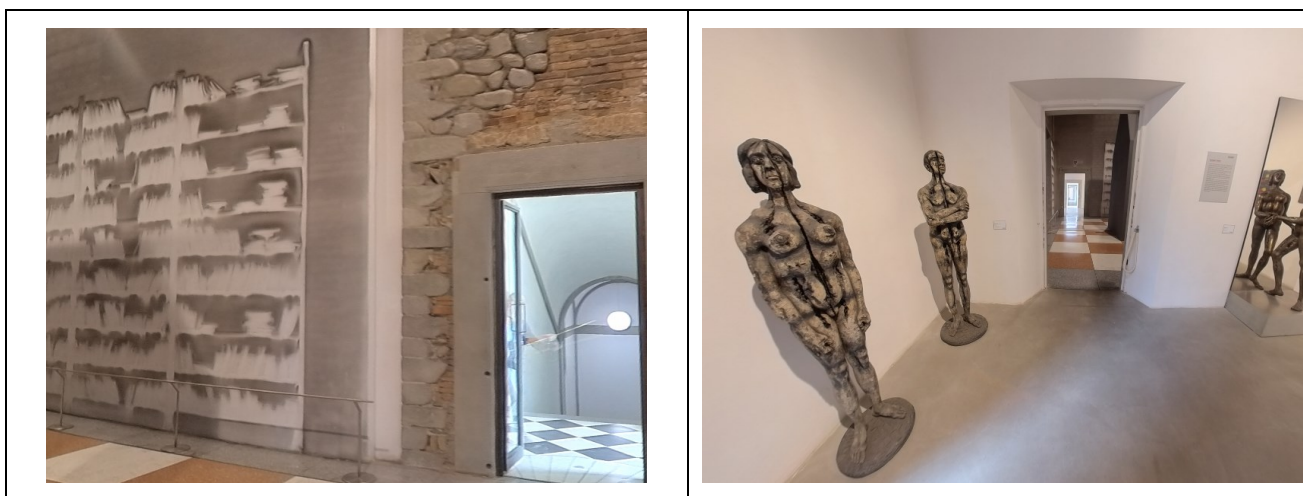
To visit the upper floors, you have to exit from the internal entrance in Via Santa and after about 20 meters, on the flat, there is the elevator that can only be used with the assistance of the staff. Lift door width 89 cm, car width and depth 140 X 150 cm, highest button on the internal keypad 133 cm high, call button height 119 cm



Entrance inside the museum itinerary first floor accessible via a ramp 107 cm long and with a slope of 6%
On the first floor, around the large central hall with an imposing double volume, Claudio Parmiggiani's shadow sculpture on the walls
The itinerary continues with the monographic rooms.

The spaces on the second floor are intended for temporary exhibitions.





Services


Additional elements

Guided tours for groups	The staff on duty is able to accompany the visit. For guided tours carried out by qualified operators, it is possible to contact the authorized tourist guides of the provincial territory, on the relevant page of the Tuscany Region website and by clicking on the Province of Pistoia
Guided tours for individuals	NO
Activities for children and families	NO
Guided tours with trained staff	<input type="checkbox"/> in sign language <input type="checkbox"/> for visitors with reduced mobility <input type="checkbox"/> in Facilitated Language (AAC)
Eventual notes	





Toilets for guests with reduced mobility

Number of accessible toilets for guests with reduced mobility	1
Location	ground floor
How to access the premises	<input checked="" type="checkbox"/> flat
Usable width of the entrance door	Above 90 cm
Type of front door	Sliding door
Toilet height	50 cm
Toilet seat with open front tooth	YES
Support handles	Yes, but with a handle on the left placed horizontally and therefore not effective to help in the passage of a person in a wheelchair on the toilet
Flexible shower on the side of the toilet	NO
Free space on the sides of the toilet	left Above 90 cm frontal Above 90 cm
Washbasin with space underneath for wheelchair approach	Above 65 cm
Baby changing table	NO
Eventual notes	
	



Project promoted by



Regione Toscana

Medical practices/healthcare facilities

Hospitals near the property	San Jacopo Hospital Via Ciliegiole, 97, 51100 Pistoia PT tel +390573 3521
Other healthcare facilities	

TESTED BY: [Handy Superabile Social Promotion Association](#) in 2024

Project carried out with the contribution of the



Presidenza del
Consiglio dei Ministri
Ministro per la disabilità