



Accommodation Sheet

General information

Accommodation name	HOTEL SAN MARCO
Typology	Hotel
Address	Strada Massetana, 70
City	Siena (SI)
Contacts	+39 0577271556 , Email: sanmarco.si@bestwestern.it
Website	www.sanmarcosiena.it
WCAG 2.1 compliant accessible website	NO
Online bookings	YES
Short description	<p>The Best Western Hotel San Marco is located in Siena, located in the western part of the city, just 1000 meters away. from its historic center.</p> <p>The structure, inaugurated in 2004, is the result of a close collaboration with some of the best Italian designers, designed to offer maximum comfort to its customers with a minimalist style and multifunctional components.</p>

TESTED AND REVIEWED BY: [Handy Superabile Social Promotion Association](#) in 2024

Please note The following information refers to the date of verification shown at the bottom of each sheet. The Association is not responsible for any significant changes made by the property after the visit.





Summary

Accommodation sheet	1
General information	1
Arrival at the property.....	3
How to reach the property.....	3
Pathway from the private/public car park to the entrance	4
Entrance to the structure.....	4
Hall - Reception	5
Rooms/apartments	6
Rooms/apartments adapted for guests with reduced mobility.....	6
Toilet facilities in the guest room for guests with reduced mobility	8
Toilet facilities in the guest room for guests with reduced mobility	11
Bar/restaurant	13
Internal pathways and common services	15
Communal toilets	15
Medical practices/healthcare facilities.....	16





Arrival at the property

How to reach the property

By car	From the A1 motorway, take the Firenze Impruneta exit, then take the freeway towards Siena for about 60km. Exit at "Siena Ovest" and turn right: after 500 meters you will reach the hotel on your right. From Grosseto via SS223
By plane	Nearest airports: Amerigo Vespucci Florence and Galileo Galilei Pisa
Assistance service for people with disabilities	YES
Embarkation/disembarkation of passengers with reduced mobility	with courtesy chair and ambulift /Finger
Tactile paths for the blind and visually impaired	YES
There is a toilet room accessible with grab handles	YES
By train	
Nearest station	Siena 5.9 km away
Assistance service for people with disabilities	NO
Eventual notes	





Pathway from the private/public car park to the entrance





Presence of private parking	YES
Presence of parking space reserved for people with disabilities	NO
Type of flooring of the private parking lot	Self locking
Public parking nearby	NO
Describe the route from the car park to the entrance and any critical issues	Obstacle-free, flat path to the entrance accessible via ramp.
Distance from parking to entrance	Variable depending on where the car is parked
	

Entrance to the structure

There is an accessible entrance	YES main entrance
How to access the structure	<input checked="" type="checkbox"/> via ramp to the right single length 455 cm, width 130 cm, slope 10%, handrail on the left
Type of entrance door	Automatic





Useful width of door/entrance gate	Above 90 cm
There are indicators and tactile maps	NO
	
	

Hall - Reception

How to reach it from the entrance	flat
Reception desk height	bench over 100 cm
Presence of multilingual staff	YES
Type of information material	<input type="checkbox"/> YES with maps/tactile signals





	<input checked="" type="checkbox"/> YES with brochure
Initial assistance is provided for visitors with disabilities	<input checked="" type="checkbox"/> YES with orientation tour of the structure <input type="checkbox"/> YES with room accompaniment <input type="checkbox"/> YES with porter service
The following aids are provided for visitors with disabilities	<input type="checkbox"/> manual wheelchair <input type="checkbox"/> Crutches <input type="checkbox"/> Comfortable shower chair
The staff followed a training course on welcoming people with different disabilities	NO
	

Rooms/apartments

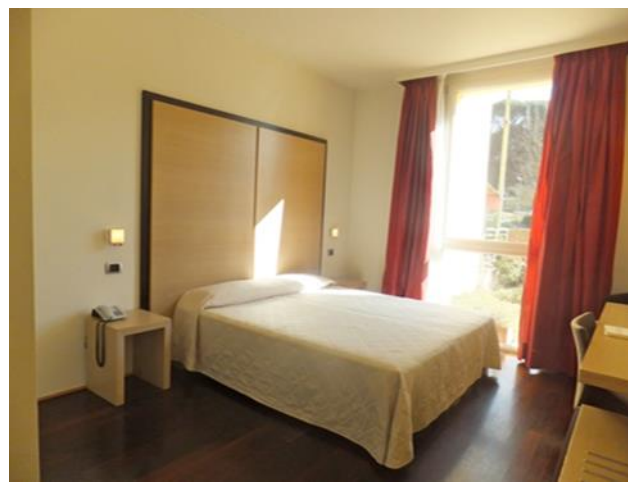
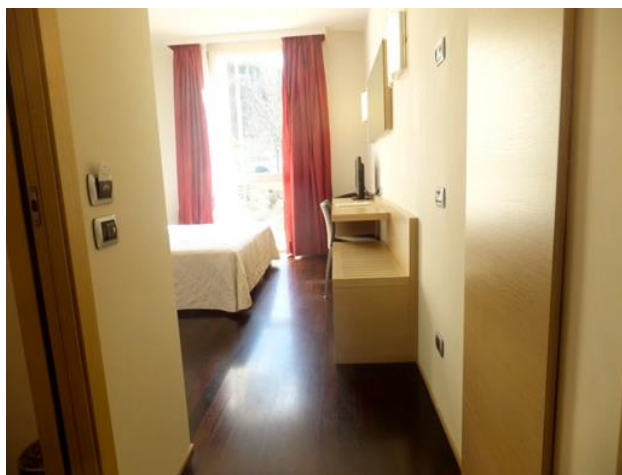
Rooms/apartments adapted for guests with reduced mobility

Number and type of rooms/apartments equipped/usable by people with reduced mobility	<input checked="" type="checkbox"/> Double rooms Triple rooms Num . 2
Room access	<input checked="" type="checkbox"/> flat





Type of entrance door	with bar handle
Usable width of entrance door	84 cm
Bed type and height	double bed 51 cm high
Free spaces on the sides of the bed	left 80 cm right Above 90 cm frontal 77 cm
Cabinet Type	with doors
Free space under the desk	72 cm
In-room options are available	<input checked="" type="checkbox"/> safe <input checked="" type="checkbox"/> minibar <input checked="" type="checkbox"/> Water Kettle <input checked="" type="checkbox"/> Iron
Eventual notes	The room represented is no. 110






Toilet facilities in the guest room for guests with reduced mobility

Access to the premises	flat
Usable width of the entrance door	87 cm
Type of door	flowing
Type of handle	built-in
Toilet height	40 cm
Toilet seat with open front tooth	YES
Support handles	Missing
Flexible shower on the side of the toilet	YES
Free space on the sides of the toilet	left 20 cm right Above 90 cm frontal 45 cm
Electric doorbell/telephone on the side of the toilet	NO
Washbasin with space underneath for wheelchair approach	66 cm
Height from the ground lower edge mirror	not sufficient for use by a person in a wheelchair





	
	
<p>Accessible shower available for guests with reduced mobility</p>	<p>YES flush with the floor</p>
<p>Type of shower</p>	<p>with 80 cm gate box and dimensions 80 cm X 80 cm</p>
<p>Shower chair</p>	<p>Stool type without armrests</p>
<p>Support handle</p>	<p>NO</p>
<p>Presence of shower head or sliding rails</p>	<p>Fixed shower head and flexible hand shower</p>
<p>Electric doorbell/telephone on the side of the shower</p>	<p>YES</p>





Room access	<input checked="" type="checkbox"/> flat
Type of entrance door	with bar handle
Usable width of entrance door	84 cm
Bed type and height	double bed 51 cm high
Free spaces on the sides of the bed	left 50 cm right Above 70 cm frontal 65 cm
Cabinet Type	with doors
Free space under the desk	72 cm
In-room options are available	<input checked="" type="checkbox"/> safe <input checked="" type="checkbox"/> minibar <input type="checkbox"/> Water Kettle <input type="checkbox"/> Iron
Eventual notes	The room represented is no. 109





Toilet facilities in the guest room for guests with reduced mobility

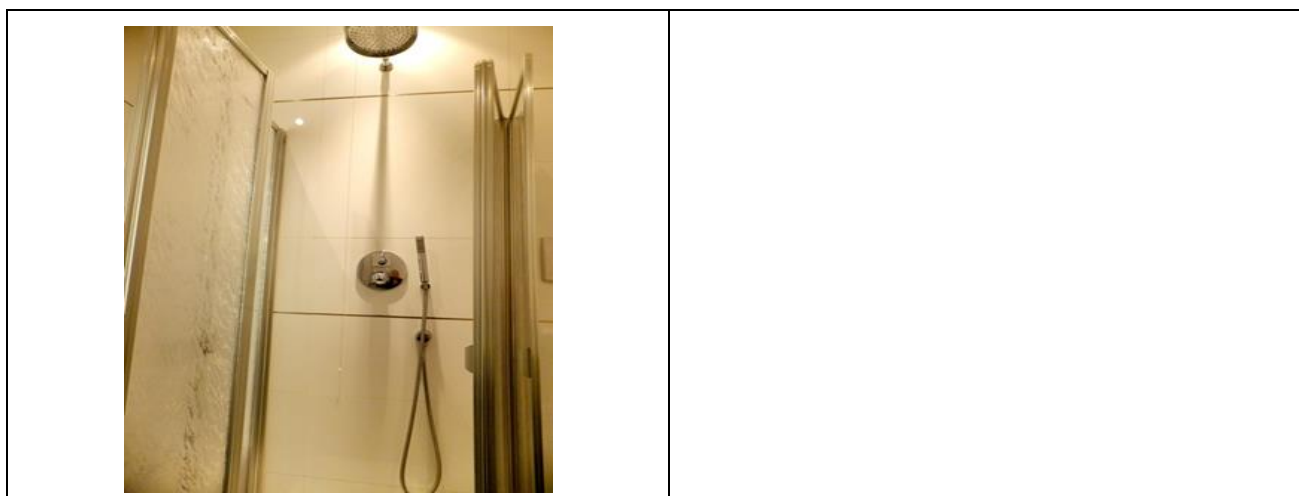
Access to the premises	flat
Usable width of the entrance door	87 cm
Type of door	flowing
Type of handle	built-in
Toilet height	40 cm
Toilet seat with open front tooth	NO
Support handles	Missing





Flexible shower on the side of the toilet	YES
Free space on the sides of the toilet	left more than 90 cm with box open right greater than 18 Cm frontal Above 90 cm
Electric doorbell/telephone on the side of the toilet	NO
Washbasin with space underneath for wheelchair approach	66 cm
Height from the ground lower edge mirror	not sufficient for use by a person in a wheelchair
	
Accessible shower available for guests with reduced mobility	YES flush with the floor
Type of shower	with 80 cm gate box and dimensions 80 cm X 80 cm
Shower chair	Stool type without armrests
Support handle	NO
Presence of shower head or sliding rails	Fixed shower head and flexible hand shower
Electric doorbell/telephone on the side of the shower	YES





Bar/restaurant

Type of venue	Bar and breakfast room
Access to the premises	<input checked="" type="checkbox"/> flat
Useful width of door/entrance gate	Above 90 cm
Bar counter height	Above 100 cm
Height of the buffet counter	78 cm high
Types of tables	with central support
Space under floor tables	with central support 72.5 cm and round 75.5 cm
Availability of high chairs for babies	YES
Table service for people with disabilities	Choose an item.
Availability of foods for celiacs	<input checked="" type="checkbox"/> bread, pasta, biscuits, ice cream <input checked="" type="checkbox"/> pre-packaged foods
There are coffee and milk dispensers	NO table service is available
A customer with reduced mobility can always reserve the same table	YES





There are toilets that can be used by a guest with reduced mobility (see "accessible toilets in the internal paths and common services)	YES
A fully equipped baby feeding service is available	NO
	
	
The restaurant has an outdoor veranda / dehors	NO



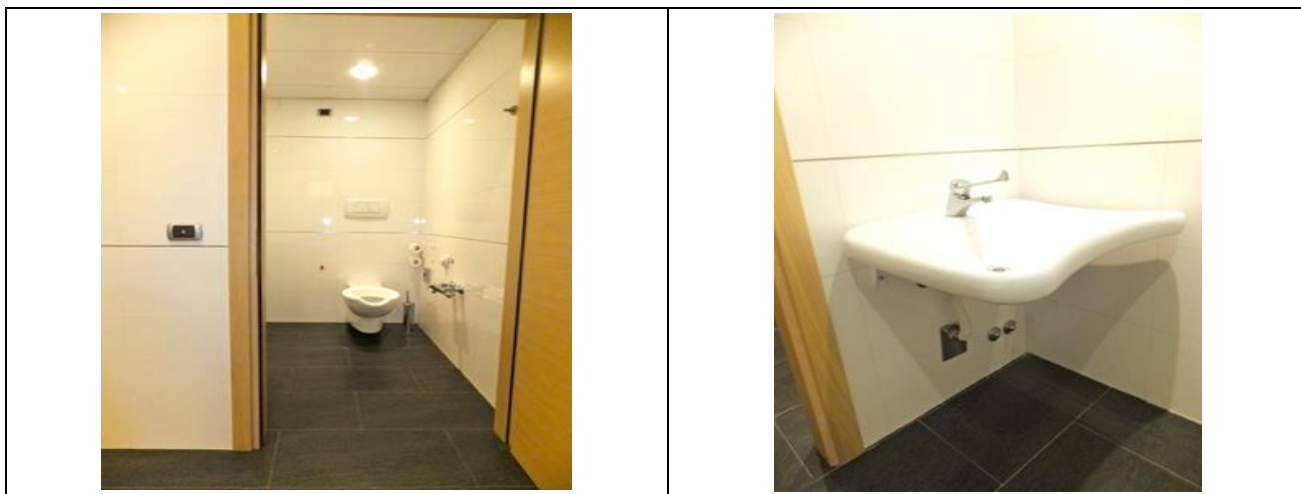


Internal pathways and common services

Communal toilets

Location of the venue	The toilet is located on floor -1, which can be reached by elevator which is located next to the bar. 80 cm gap. The call button is 110 cm high and is embossed. The cabin is 108 cm wide and 130 cm deep. The internal keyboard is 120 cm high, is equipped with a grab bar and a mirror
How to access the premises	flat
Usable width of the entrance door	89 cm
Type of door	with inwardly opening door
Type of handle	lever
Toilet height	52 cm
Toilet seat with open front tooth	YES
Support handles	Missing
Flexible shower on the side of the toilet	YES without thermostat
Free space on the sides of the toilet	left 25 cm right Above 90 cm frontal Above 90 cm
Electric doorbell/telephone on the side of the toilet	Choose an item.
Washbasin with space underneath for wheelchair approach	66 cm
Height from the ground lower edge mirror	Missing mirror
Baby changing table	NO





Medical practices/healthcare facilities

Hospitals near the property	A.O.U – Policlinico Santa Maria alle Scotte, Via M. Bracci 11, Siena - Phone +39 0577 585111 Website www.ao-siena.toscana.it
Any dialysis facilities	Dialysis service on holiday https://www.regione.toscana.it/-/dialisi-in-vacanza-1

