

# Dante

## ALIGHIERI

Born in Florence **1265**  
Died in Ravenna **1321**



## Who was Dante?

Dante Alighieri was the great Italian poet who takes his readers on a tour of the afterlife in his masterpiece *The Divine Comedy*. He was passionately in love with Beatrice Portinari who he immortalized in this great work.

## ACCOMPLISHMENTS



HIS 14,233 LINE POEM, **THE DIVINE COMEDY**, CREATED A NEW VISION OF THE AFTERLIFE

L'alto timone et la granosa briglia  
Che si mal seppe già regger Phactente.  
Onde dal suo Timon l'arnata piglia  
Fur allora surta al balzo dorante  
Precedea quel comella è anchor sermiglia.  
A l'hor che fuor dogni pensier la menza  
Casi delle fiore ose el uolo  
Penetrar suol, che li si fan presenz.  
Quando mentre che anchor gli occhi miei uole  
Dua leggiar sonno a scender mi pareua  
(Ne fo già ome) infra la terra el cielo.

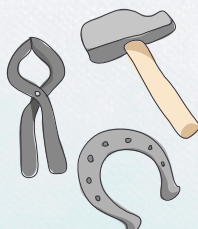
INVENTED TERZA RIMA, A RHYMING VERSE STANZA FORM THAT CONSISTS OF AN INTERLOCKING THREE-LINE RHYME SCHEME

## Curiosities



Upon his death, it was believed Dante had failed to complete the *Divine Comedy*, a dream supposedly instructed his son where to find the final few cantos, behind a piece of furniture.

Dante supposedly broke and bent a blacksmith's tools after he heard him misquote his lines, saying that words were his craft and the blacksmith had damaged them.



## Don't miss



Palazzo Vecchio  
Firenze



The Baptistery of San Giovanni  
Firenze



Poppi Castle  
Poppi



Santa Croce Church  
Firenze



Dante House and Museum  
Firenze



Giovagallo Castle  
Tresana



Benedictine Abbey  
San Godenzo



Romena Castle  
Pratovecchio, Stia

“THE PATH TO PARADISE. BEGINS IN HELL”